



Schenectady County
Purchasing Department
ADDENDUM

620 State St.-2nd Floor
Schenectady, NY 12305
purchasing@schenectadycountyny.gov
518.388.4240

RFB-2025-28
SCHENECTADY COUNTY DMV PARKING LOT IMPROVEMENTS

ADDENDUM #2

Date: 03/06/2025

The purpose of this addendum is to provide detailed information to all Bidders. This addendum is hereby included in and made part of the Contract Documents, whether or not attached thereto. Receipt of this Addendum must be acknowledged on the bid form.

The following documents is hereby included in the documents posted on Bidnet and provided to plan holders:

CONTENTS/ RESPONSE TO QUESTIONS/ REFERENCE TO ATTACHMENTS

General:

1. This addendum updates certain drawings and answers questions related to those drawings.

Attachment

1. C-111 Removals Plan Add Alternates 1 & 2
2. C-121 Materials Plan Add Alternates 1 & 2

General Bid RFI's:

1. It is called out on several pages to mill and fill the parking lots (base bid and alternates), and it is assumed for bidding purposes to mill 4", however, all the callouts for the proposed asphalt section refer to the Asphalt Paving detail 1/C-500 which is a full depth replacement detail. What is the proposed asphalt section in the mill and fill limits?

a. **Answer:**

Milling is to occur on all asphalt paved surfaces.

For the Base Bid area (Shirley Drive Lot), asphalt is to be fully removed (approx. 4") to the subbase course. Additional Type 2 subbase will be required in some areas to bring the parking lot up to proposed grade. Detail 1/C-500 represents the



Schenectady County
Purchasing Department
ADDENDUM

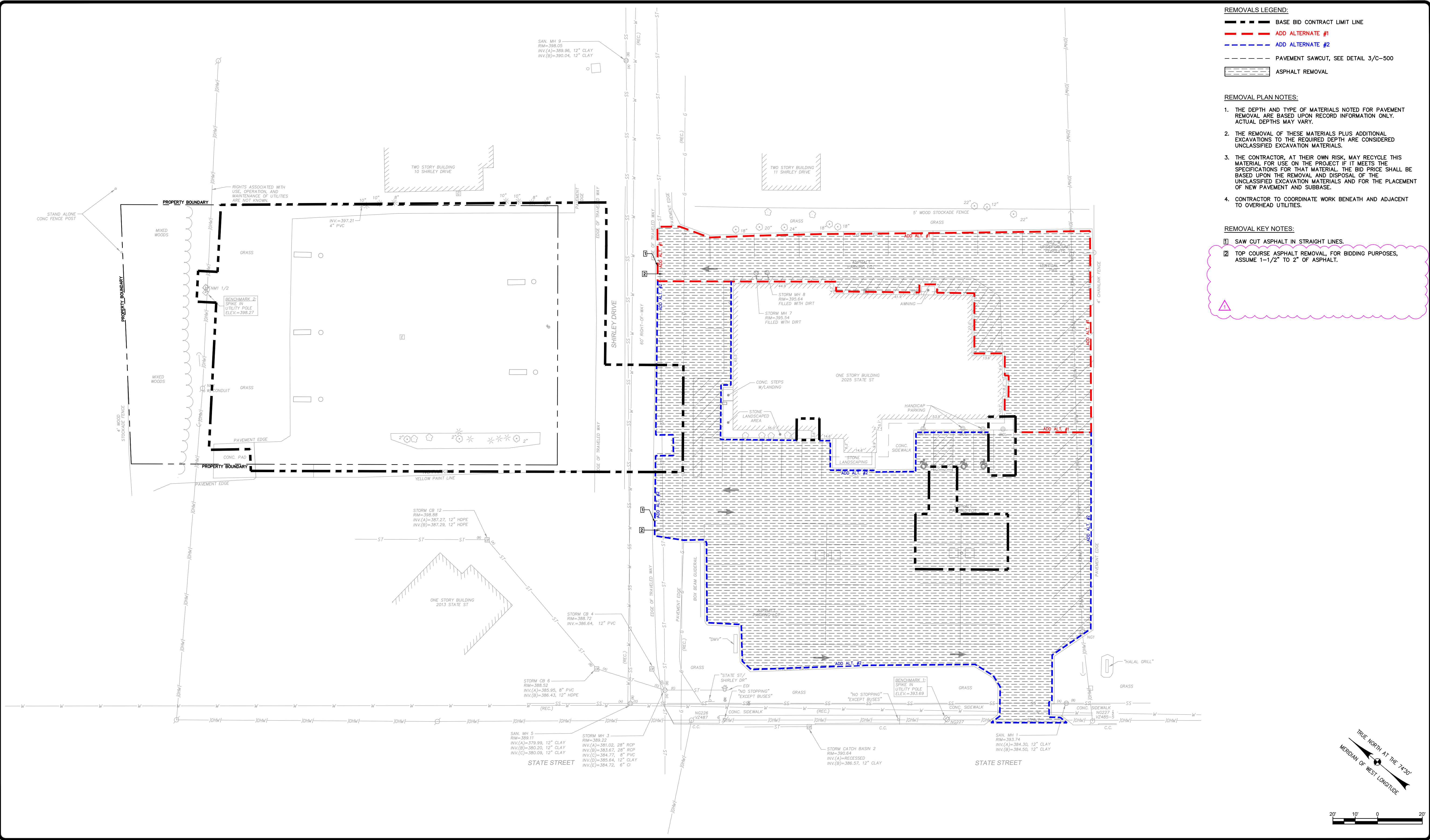
620 State St.-2nd Floor
Schenectady, NY 12305
purchasing@schenectadycountyny.gov
518.388.4240

minimum subbase required, so subbase depths can exceed 12” at the Base Bid lot (Shirley Drive Lot).

For the Add Alternate areas #1 and #2, milling should only remove the top course. The top course may be between 1-1/2” and 2”. The contractor shall refer to C-121 (RFI#1 / Addendum #2), Detail 1/C-500, and specification section 321216 for replacing the asphalt top course. The new top course may be 1-1/2” and 2” depending on how much asphalt is removed. The contractor is responsible for matching all finished grades.

Please acknowledge this addendum on your bid form.

END OF ADDENDUM #2



- REMOVALS LEGEND:**
- — — — — BASE BID CONTRACT LIMIT LINE
 - - - - - ADD ALTERNATE #1
 - - - - - ADD ALTERNATE #2
 - - - - - PAVEMENT SAWCUT, SEE DETAIL 3/C-500
 - [Hatched Box] ASPHALT REMOVAL

- REMOVAL PLAN NOTES:**
1. THE DEPTH AND TYPE OF MATERIALS NOTED FOR PAVEMENT REMOVAL ARE BASED UPON RECORD INFORMATION ONLY. ACTUAL DEPTHS MAY VARY.
 2. THE REMOVAL OF THESE MATERIALS PLUS ADDITIONAL EXCAVATIONS TO THE REQUIRED DEPTH ARE CONSIDERED UNCLASSIFIED EXCAVATION MATERIALS.
 3. THE CONTRACTOR, AT THEIR OWN RISK, MAY RECYCLE THIS MATERIAL FOR USE ON THE PROJECT IF IT MEETS THE SPECIFICATIONS FOR THAT MATERIAL. THE BID PRICE SHALL BE BASED UPON THE REMOVAL AND DISPOSAL OF THE UNCLASSIFIED EXCAVATION MATERIALS AND FOR THE PLACEMENT OF NEW PAVEMENT AND SUBBASE.
 4. CONTRACTOR TO COORDINATE WORK BENEATH AND ADJACENT TO OVERHEAD UTILITIES.

- REMOVAL KEY NOTES:**
- ① SAW CUT ASPHALT IN STRAIGHT LINES.
 - ② TOP COURSE ASPHALT REMOVAL, FOR BIDDING PURPOSES, ASSUME 1-1/2" TO 2" OF ASPHALT.

SUBMITTAL / REVISIONS					
No.	DATE	DESCRIPTION	BY	REVIEWED BY:	DATE
1	1/21/2025	BID DOCUMENTS	JCS	JMB	1/16/2025
△	3/06/2025	RFI #1 / ADDENDUM #2			

PROJ. MANAGER:	JCS
DESIGNED BY:	JCS
DRAWN BY:	AIC
CHECKED BY:	JMB

THE ALTERATION OF THIS MATERIAL IN ANY WAY, UNLESS DONE UNDER THE DIRECTION OF A COMPARABLE PROFESSIONAL, (I.E.) ARCHITECT FOR AN ARCHITECT, ENGINEER FOR AN ENGINEER OR LANDSCAPE ARCHITECT FOR A LANDSCAPE ARCHITECT, IS A VIOLATION OF THE NEW YORK STATE EDUCATION LAW AND/OR REGULATIONS AND IS A CLASS "A" MISDEMEANOR.



Engineering Architecture and Land Surveying, P.C.

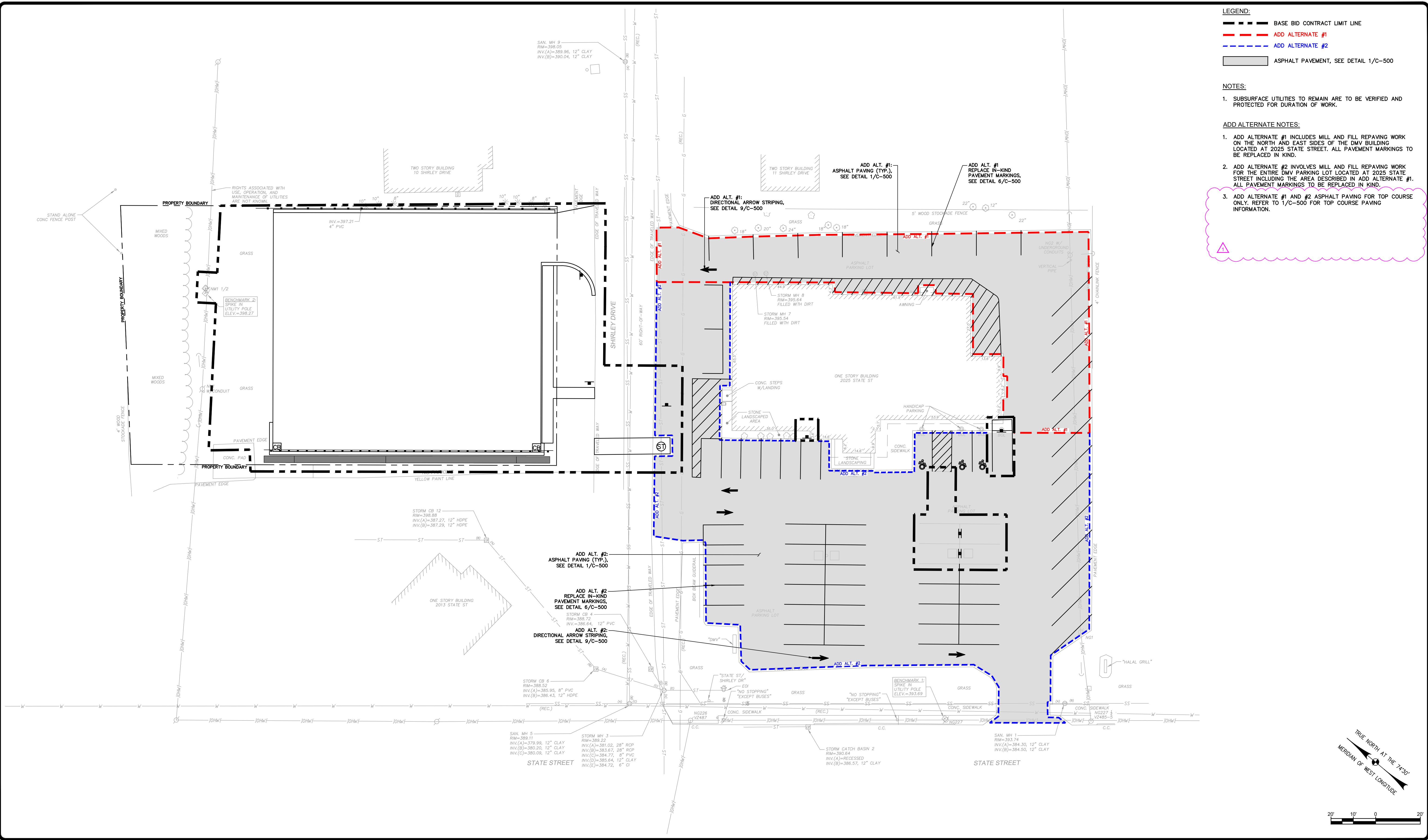
DEPARTMENT OF MOTOR VEHICLES
PARKING IMPROVEMENTS

**REMOVALS PLAN
ADD ALTERNATES 1 & 2**

2 SHIRLEY DRIVE SCHENECTADY
SCHENECTADY COUNTY, NEW YORK

SCALE: AS SHOWN
CONTRACT No.:
MJ PROJ. No.: 1668.05B
DATE: 1/21/2025

C-111



- LEGEND:**
- BASE BID CONTRACT LIMIT LINE
 - - - - - ADD ALTERNATE #1
 - - - - - ADD ALTERNATE #2
 - ASHPALT PAVEMENT, SEE DETAIL 1/C-500
- NOTES:**
- SUBSURFACE UTILITIES TO REMAIN ARE TO BE VERIFIED AND PROTECTED FOR DURATION OF WORK.
- ADD ALTERNATE NOTES:**
- ADD ALTERNATE #1 INCLUDES MILL AND FILL REPAVING WORK ON THE NORTH AND EAST SIDES OF THE DMV BUILDING LOCATED AT 2025 STATE STREET. ALL PAVEMENT MARKINGS TO BE REPLACED IN KIND.
 - ADD ALTERNATE #2 INVOLVES MILL AND FILL REPAVING WORK FOR THE ENTIRE DMV PARKING LOT LOCATED AT 2025 STATE STREET INCLUDING THE AREA DESCRIBED IN ADD ALTERNATE #1. ALL PAVEMENT MARKINGS TO BE REPLACED IN KIND.
 - ADD ALTERNATE #1 AND #2 ASPHALT PAVING FOR TOP COURSE ONLY. REFER TO 1/C-500 FOR TOP COURSE PAVING INFORMATION.

SUBMITTAL / REVISIONS					
No.	DATE	DESCRIPTION	BY	REVIEWED BY:	DATE
1	1/21/2025	BID DOCUMENTS	JCS	JMB	1/16/2025
△	3/06/2025	RFI #1 / ADDENDUM #2			

PROJ. MANAGER:	JCS
DESIGNED BY:	JCS
DRAWN BY:	AIC
CHECKED BY:	JMB

THE ALTERATION OF THIS MATERIAL IN ANY WAY, UNLESS DONE UNDER THE DIRECTION OF A COMPARABLE PROFESSIONAL, (I.E.) ARCHITECT FOR AN ARCHITECT, ENGINEER FOR AN ENGINEER OR LANDSCAPE ARCHITECT FOR A LANDSCAPE ARCHITECT, IS A VIOLATION OF THE NEW YORK STATE EDUCATION LAW AND/OR REGULATIONS AND IS A CLASS "A" MISDEMEANOR.



Engineering Architecture and Land Surveying, P.C.

DEPARTMENT OF MOTOR VEHICLES
PARKING IMPROVEMENTS

**MATERIALS PLAN
ADD ALTERNATES 1 & 2**

2 SHIRLEY DRIVE SCHENECTADY
SCHENECTADY COUNTY, NEW YORK

SCALE: AS SHOWN
CONTRACT No.:
MJ PROJ. No.: 1668.05B
DATE: 1/21/2025

C-121