



Schenectady County  
Purchasing Department  
**ADDENDUM**

620 State St.-2nd Floor  
Schenectady, NY 12305  
[purchasing@schenectadycountyny.gov](mailto:purchasing@schenectadycountyny.gov)  
518.388.4240

---

**RFB-2024-56**  
**Schenectady County Public Works Garage Building and Sign Shop Project**

**ADDENDUM #5**

Date: 11/12/2024

The purpose of this addendum is to provide detailed information to all Bidders. This addendum is hereby included in and made part of the Contract Documents, whether or not attached thereto. Receipt of this Addendum must be acknowledged on the bid form.

The following documents are hereby included in the documents posted on Bidnet and provided to plan holders:

**CONTENTS/ RESPONSE TO QUESTIONS/ REFERENCE TO ATTACHMENTS**

**General:**

1. This addendum changes the documents for Bid #RFB-2024-56.
2. Drawings:
  - a. Revise E-301

**Attachments:**

1. Revised Drawing E-301

**BID – Request for Information and Response:**

1. The new ST piping into the new water room shows (2) FD-A and (1) FD-B; What is the size of FD-B is it really 10"? and Do these drains need to be trapped being they are running to the storm?
  - a. **Answer: Yes, it (10") is sized to handle the flow from testing the fire pump. A trap is not required and there is no vent piping.**



Schenectady County  
Purchasing Department  
**ADDENDUM**

620 State St.-2nd Floor  
Schenectady, NY 12305  
[purchasing@schenectadycountyny.gov](mailto:purchasing@schenectadycountyny.gov)  
518.388.4240

- 
2. Drawing E201 Panel Schedule P1 says to feed panel M1 with 3/0 conductors, however the one-line diagram on E-301 says 4/0 conductors. Which is correct?
- a. **Answer: 4/0 Conductors are correct. Panel Schedule M1 revise circuit conductors on branch circuit.37, 39 41 to 4/0 to match one line diagram.**
3. Addenda #4 Drawing E-301 Detail #1:
- a. The primary wiring on this one-line shows it is provided by the EC, however drawing E002 detail #3 says its by the utility company. Which is correct?
- i. **Answer: All Primary wiring shall be by National Grid.**
- b. This shows a 600A service from National Grid. This would require instrumentation metering however a CT enclosure is not shown. Is this something that should be provided by the EC, and where would it be located?
- i. **Answer: E.C. shall provide CT cabinet at same location as meter indicated on power plan**
- c. Does the MDP need to be rated for 1000A with a 600A service feed?
- i. **Answer: No. Revise to 600amp.**
- d. After the tap of the service feed this ECB is 800A. Both the line side and load side (A4) are undersized for this application. Is the ECB 800A correct?
- i. **Answer: 800amp rating is required by NEC Art 695, breaker is sized for fire pump lock rotor amps.**
- e. The Standby Generator Says NIC. What is the intention for the EC in providing conduits and conductors to this location, leave coils of wire in this location?
- i. **Answer: Standby Generator is included. See revised E-301**
- f. The conduit between the Generator and ATS calls out a 3" conduit with conductors but it also noted as a 2" conduit for controls. Is this 2" conduit in addition to the 3" conduit?
- i. **Answer: The 3"C is for the feeder, and the additional 2"C is for the generator controls wiring.**
- g. There isn't a ground electrode system shown after the tap of the service conductors prior to the MDP where the ground would derive from. Detail #4 does not correspond to the new one-line.
- i. **Answer: See revised detail 4, E-301.**
4. Can specifications be provided regarding which type of cord reel will need to be provided?
- a. **Answer: Refer to E-001**



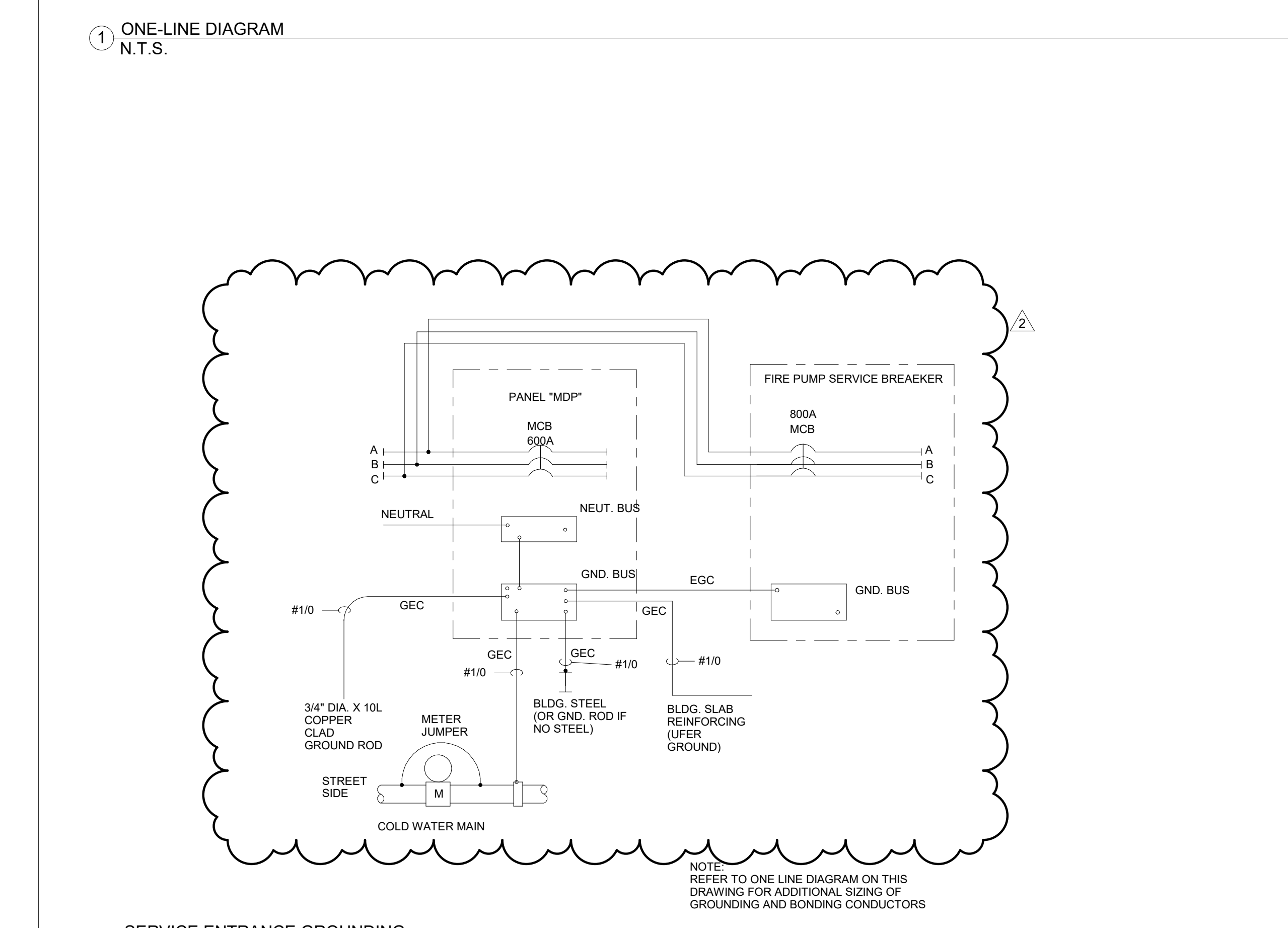
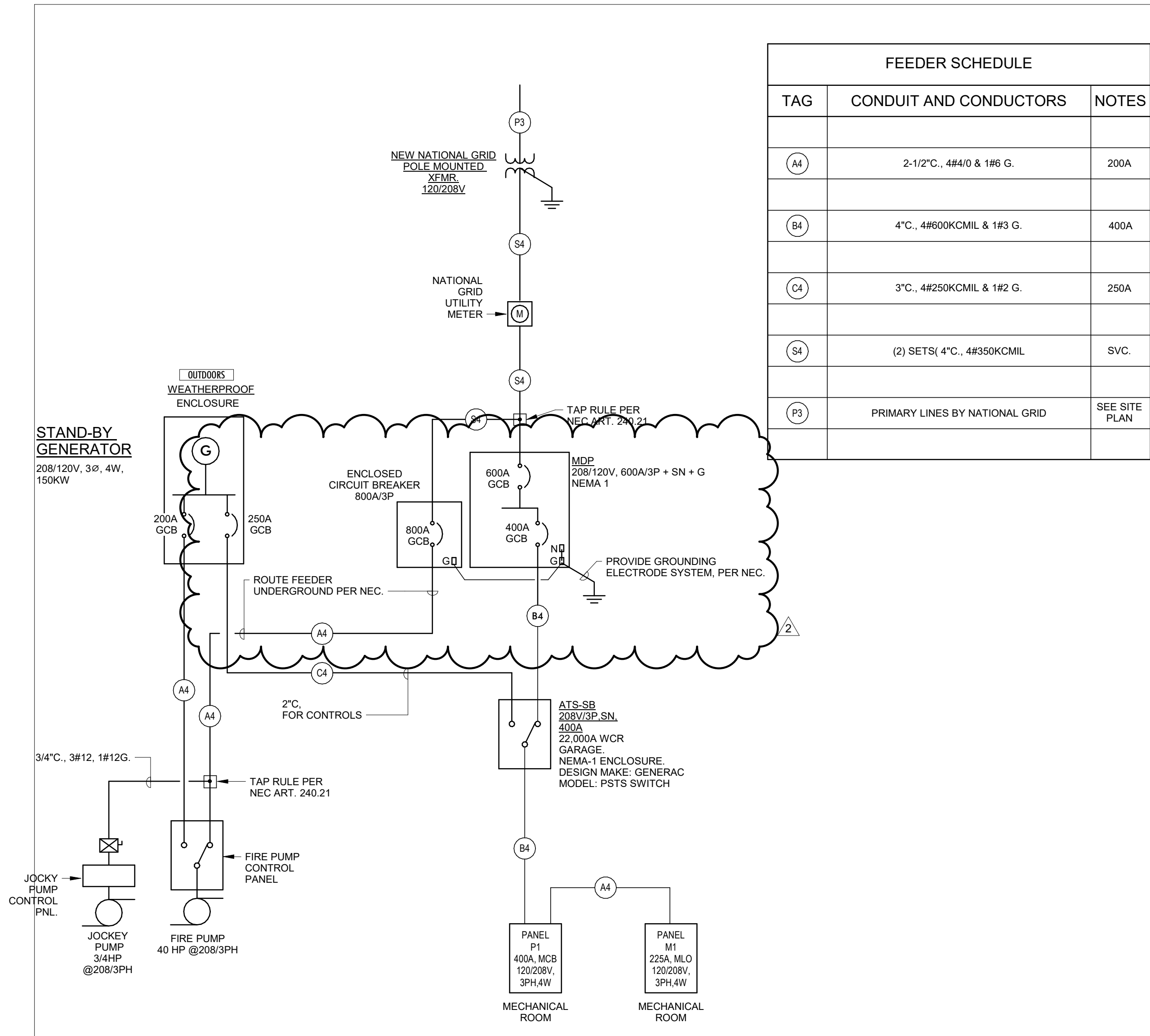
Schenectady County  
Purchasing Department  
**ADDENDUM**

620 State St.-2nd Floor  
Schenectady, NY 12305  
[purchasing@schenectadycountyny.gov](mailto:purchasing@schenectadycountyny.gov)  
518.388.4240

- 
5. Drawing E-201 that was revised in addenda #4 note #5 says to provide the 150kw generator. Drawing E-301 which was also revised in Addenda #4 says the generator is not in contract. Which is correct? If we need to provide the generator, please provide a spec for this equipment.
    - a. **Answer: The generator is included in this project. The specification was included in addenda #4 (263211- Engine Generator Set)**
  
  6. Drawing E-301 shows a combination motor starter after the tap before the jockey pump controller. However, this jockey pump is not shown on the mechanical equipment schedule. Is there a spec regarding size and type of motor starter?
    - a. **Answer: Starter sizes is similar to NEMA sizer 0 rated at 18amps with a type NEMA 1 enclosure. The Jockey pump horsepower size is indicated on the one-line.**
  
  7. Can a spec be provided for the lighting controls, such as occupancy sensors?
    - a. **Answer: Ceiling occupancy sensor basis of design is Acuity Brands Controls CM PDT 9.**
  
  8. Can just the Asbestos part be bid on?
    - a. **Answer: The asbestos removals are not part of this project and are bid under a separate advertisement.**
  
  9. Specification Section 081102, Steel Doors and Frames, Subsection 2.4 G Line 4 calls for factory pre-finished doors and frames in all locations. The door and frame manufacturer we use, does not factory finish welded frames over 4'0"wide. – Can frames be factory primed and field finished? If so, can doors also be factory primed and field finished?
    - a. **Answer: Doors are to be bid as specified.**

**Please acknowledge this addendum on your bid form**

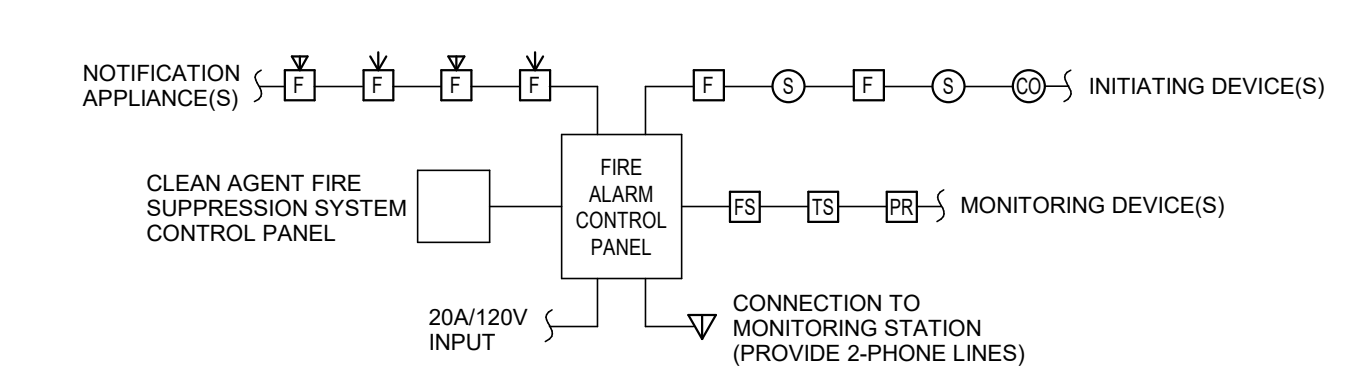
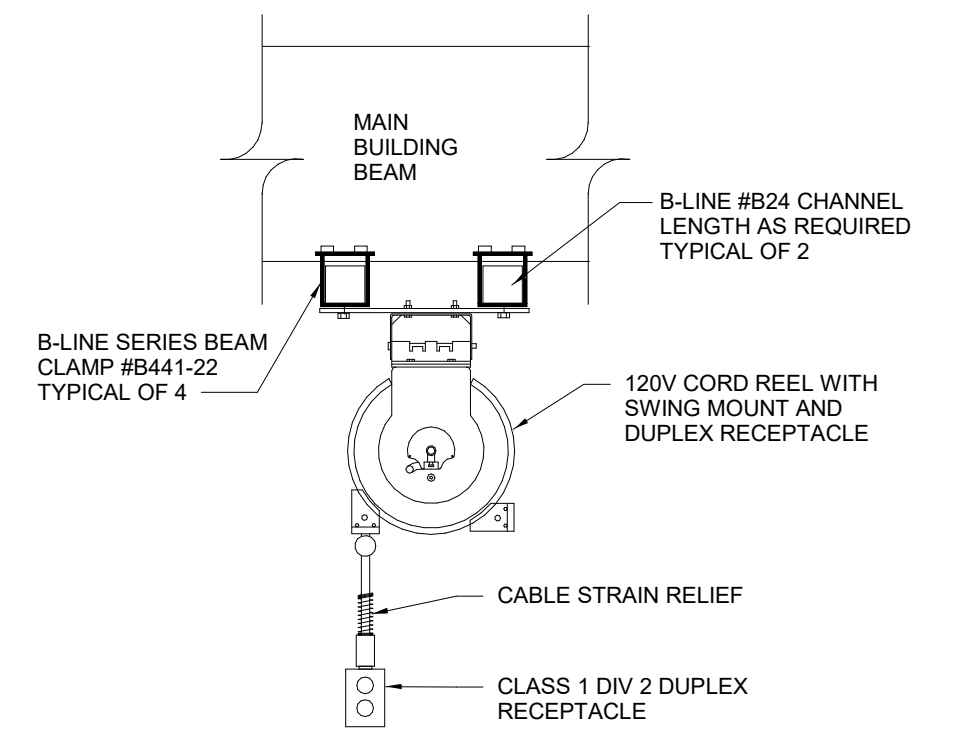
**END OF ADDENDUM #5**



FEEDER SCHEDULE		
TAG	CONDUIT AND CONDUCTORS	NOTES
A4	2-1/2" C., 4#4/0 & 1#6 G.	200A
B4	4" C., 4#600KCMIL & 1#3 G.	400A
C4	3" C., 4#250KCMIL & 1#2 G.	250A
S4	(2) SETS (4" C., 4#350KCMIL)	SVC.
P3	PRIMARY LINES BY NATIONAL GRID	SEE SITE PLAN

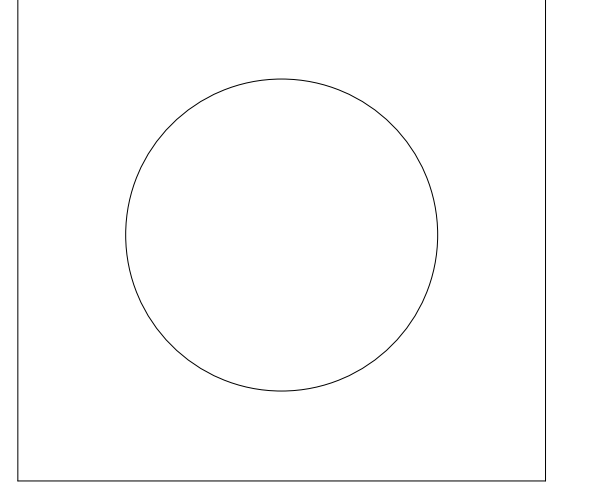
MECHANICAL EQUIPMENT SCHEDULE										
EQUIPMENT	LOCATION	HP/KVA	VOLTS	PHASE	CFM	PANEL - CIRCUIT BREAKER SIZE	CONDUIT/WIRE	DISCONNECT SWITCH (BY EC UON)	FIRE ALARM SHUT DOWN REQUIRED	NOTES
ACCU-1	GRADE	60 A	208 V	1	N/A	M1-60A/2P	1" WITH 3#8, 1#10 GROUND	60A/2P/NEMA 3R	NO	FIELD LOCATE DISCONNECT SWITCH WITH MC
CEF-1	BATHROOM	19 W	120 V	1	N/A	M1-20A/1P	3/4" WITH 2#12, 1#12 GROUND	MOTOR RATED SWITCH (M.R.S.)	NO	FIELD LOCATE M.R.S. SWITCH WITH MC
EF-1	GARAGE	1 HP	120 V	1	N/A	M1-30A/1P	3/4" WITH 2#10, 1#10 GROUND	INTEGRAL	NO	
EF-2	GARAGE	1 HP	120 V	1	N/A	M1-30A/1P	3/4" WITH 2#10, 1#10 GROUND	INTEGRAL	NO	
EF-3	FIRE PUMP ROOM	1/8	120 V	1	N/A	M1-20A/1P	3/4" WITH 2#12, 1#12 GROUND	INTEGRAL	NO	
ERV-1	GARAGE	1/2 HP	120 V	1	N/A	M1-25A/1P	3/4" WITH 2#10, 1#10 GROUND	30A/1P/240V NEMA 1	NO	FIELD LOCATE DISCONNECT SWITCH WITH MC
ERV-2	MECHANICAL	0.11 HP	120 V	1	N/A	M1-15A/1P	3/4" WITH 2#10, 1#10 GROUND	30A/1P/240V NEMA 1	NO	
EUH-1	FIRE PUMP ROOM	5 KW	208 V	1	N/A		3/4" WITH 2#10, 1#10 GROUND	MOTOR RATED SWITCH (M.R.S.)	NO	FIELD LOCATE M.R.S. SWITCH WITH MC
EW-1	FOYER	3.0 kW	208 V	1	N/A	M1-20A/2P	3/4" WITH 2#12, 1#12 GROUND	INTEGRAL	NO	
EW-2	STORAGE	3.0 kW	208 V	1	N/A	M1-20A/2P	3/4" WITH 2#12, 1#12 GROUND	INTEGRAL	NO	
EW-3	BATHROOM	3.0 kW	208 V	1	N/A	M1-20A/2P	3/4" WITH 2#12, 1#12 GROUND	INTEGRAL	NO	
EW-4	MECHANICAL	3.0 kW	208 V	1	N/A	M1-20A/2P	3/4" WITH 2#12, 1#12 GROUND	INTEGRAL	NO	
FIRE PUMP CONTROLLER	FIRE PUMP ROOM	40HP	208 V	3	N/A	ENCLOSED CB 800A/3P	2-1/2" C., 3 #5/0, 1#4G	FIRE PUMP CONTROLLER	NO	
GF-1	MECHANICAL	20 A	120 V	1	N/A	M1-20A/1P	3/4" WITH 2#12, 1#12 GROUND	INTEGRAL	NO	
RAD-1	GARAGE	15 A	120 V	1	N/A	M1-20A/1P	3/4" WITH 2#12, 1#12 GROUND	INTEGRAL	NO	
RAD-2	GARAGE	15 A	120 V	1	N/A	M1-20A/1P	3/4" WITH 2#12, 1#12 GROUND	INTEGRAL	NO	
RAD-3	GARAGE	15 A	120 V	1	N/A	M1-20A/1P	3/4" WITH 2#12, 1#12 GROUND	INTEGRAL	NO	
UH-1	MEZZANINE	15 A	120 V	1	N/A	M1-20A/1P	3/4" WITH 2#12, 1#12 GROUND	INTEGRAL	NO	
WH-1	MECHANICAL	84 W	120 V	1	N/A	M1-20A/1P	3/4" WITH 2#12, 1#12 GROUND	MOTOR RATED SWITCH (M.R.S.)	NO	FIELD LOCATE M.R.S. SWITCH WITH PC

\*= PROVIDE MOTOR RATED TOGGLE SWITCH (MRS) WITH THERMAL OVERLOADS, SIZED PER MOTOR NAMEPLATE DATA



SYSTEM INPUTS	SYSTEM OUTPUTS																						
	A	B	C	D	E	F	G	H	I	J	K	L	M	N	O	P	Q	R	S	T		U	V
1 SMOKE SENSOR/DETECTOR	•	•					•	•			•	•			•	•	•	•					1
2 MANUAL PULL STATION	•	•					•	•			•	•			•	•	•	•					2
3 HEAT SENSOR/DETECTOR	•	•					•	•			•	•			•	•	•	•					3
4 CO SENSOR/DETECTOR			•	•					•														4
5 WATERFLOW SWITCH	•	•					•	•			•	•			•	•	•	•					5
6 TAMPER SWITCH			•	•			•	•			•	•			•	•	•	•					6
7 POST INDICATOR VALVE SWITCH			•	•			•	•			•	•			•	•	•	•					7
8 DUCT SMOKE DETECTOR	•	•	•	•			•	•			•	•			•	•	•	•					8

**5 FIRE ALARM MATRIX**  
N.T.S.



CONTRACT: **PLUMBING**

REVISIONS

NO.	REVISION	DATE
2	ADDENDUM 5	11/12/24
1	ADDENDUM 4	10/25/24
	BID DOCUMENTS	08/29/24
	REVISION	DATE

BID DOCUMENTS  
08/29/2024

DRAWN/DESIGN BY: FR      CHECKED BY: CB

THE ALTERATION OF THIS DOCUMENT IN ANY WAY, UNLESS UNDER THE DIRECTION OF A PROFESSIONAL ENGINEER, IS A VIOLATION OF THE NEW YORK STATE EDUCATION LAW