



Schenectady County
Purchasing Department

620 State St.-2nd Floor
Schenectady, NY 12305
purchasing@schenectadycountry.gov
518.388.4240

ADDENDUM

RFB-2024-52
SCHENECTADY COUNTY JAIL MEDICAL INTERIOR RENOVATIONS
C2 DESIGN GROUP

ADDENDUM #9

Issued Date: 1/9/2025

The purpose of this addendum is to provide detailed information to all Bidders. This addendum is hereby included in and made part of the Contract Documents, whether or not attached thereto. Receipt of this Addendum must be acknowledged on the bid form.

CONTENTS/RESPONSE TO QUESTIONS/REFERENCE TO ATTACHMENTS

General:

1. This addendum changes the documents for Bid #RFB-2024-52.
2. 01 15 00 – Project Master Schedule
 - a. Bid Due/Opening date to Thursday January 16th, 2025 @ 2:00 pm.

Revised Drawings and Specifications:

1. Delete Drawing G101
 - a. Delete G101 – Phasing Plan (See project phasing description below)
2. Delete Specification 10 22 10 Wire Mesh Partitions (Addendum #5)
3. Drawing D100 – Basement Floor Demolition Plan
 - a. Revision #4
4. Drawing A900 – Schedules
 - a. Revision #4
5. Drawing A901 – Finish Plan
 - a. Revision #4

Project Phasing

1. The project shall be phased in order of work as described below:
 - a. Phase 1a – Plumbing contractor (PC) shall install new flush valves in area 701 cells and plumbing chase. General contractor (GC) - Modification and new work in Temporary Nursing area.
 - b. Phase 1b – (PC) – Install new floor drains in area 701 chase and connect piping in basement chase. (GC) to pour new Gypsum Cement based underlayment floor in area 701 chase.
 - c. Phase 2 – Once Temporary Nursing area is approved and operational Per County/Jail confirmation, all contracts (GC), (PC), (HVAC) & (EC) to start basement medical area work.

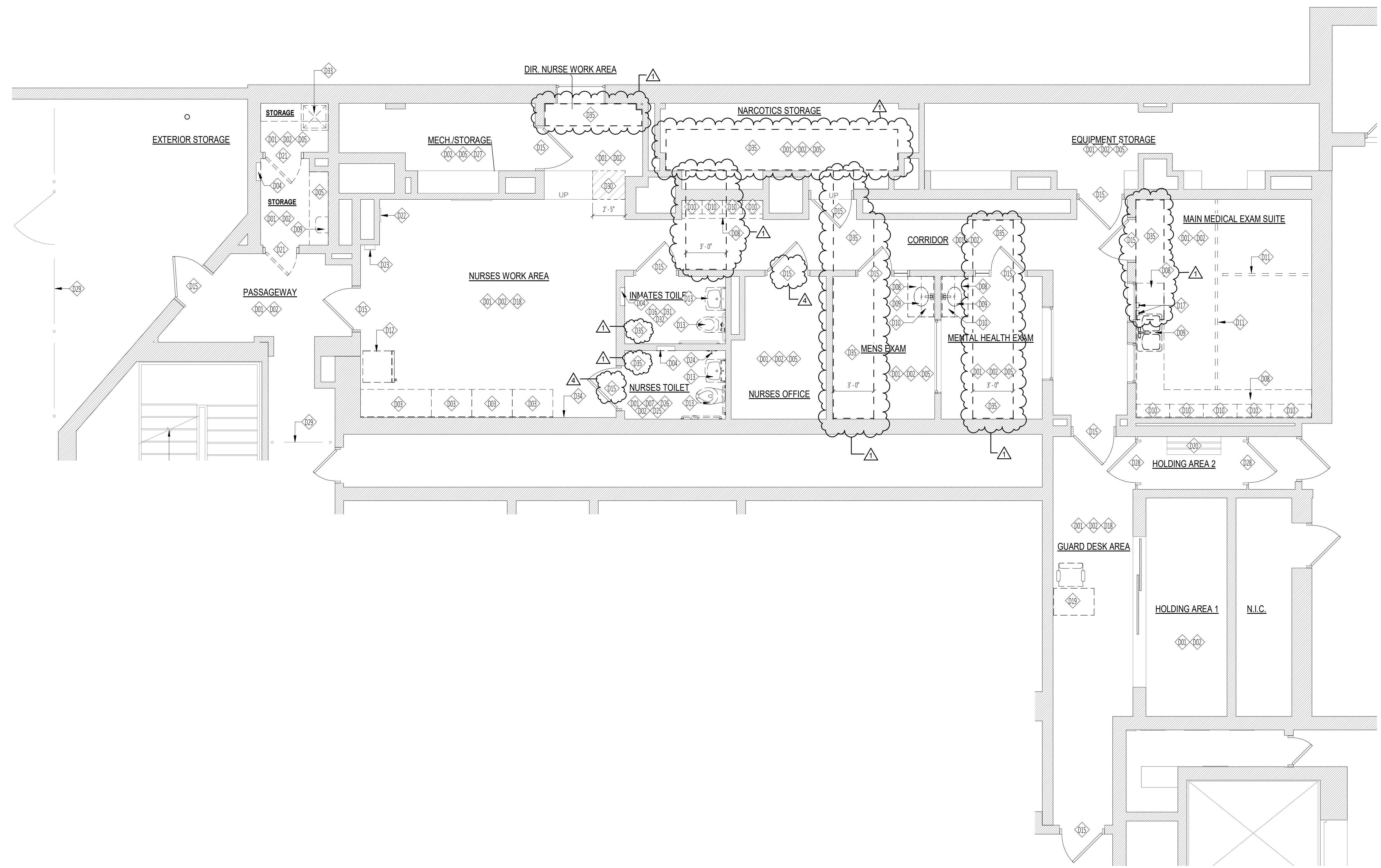
Please acknowledge this addendum on your bid form.

END OF ADDENDUM #9

- ### General Demolition Notes
1. REFERENCE G102 FOR ADDITIONAL DEMOLITION NOTES.
 2. REMOVE ALL EXISTING FLOOR FINISH IN AREA OF WORK AS NOTED BY KEYNOTES. PATCH, REPAIR, AND PREP FLOOR AS REQUIRED FOR NEW WORK. MAINTAIN ALL EXISTING CONTROL JOINTS AND EXPANSION JOINTS.
 3. REMOVE ANY AND ALL WALL BASE IN PREPARATION FOR THE WORK.
 4. REMOVE ALL DAMAGED PLASTER FINISH AT BEAMS, CEILING, AND WALLS BACK TO STABLE SUBSTRATE.

Demolition Floor Plan Legend

D01	REMOVE FLOOR BASE AND FLOOR FINISH DOWN TO EXISTING SUBFLOOR, PREP TO RECEIVE SCHEDULED FINISH
D02	REMOVE EXISTING LIGHT FIXTURES IN THEIR ENTIRETY. MAINTAIN EXISTING WIRING FOR NEW CONNECTION. SEE ELECTRICAL DRAWINGS FOR ADDITIONAL INFORMATION
D03	REMOVE EXISTING COUNTERTOP AND END PANELS. COORDINATE WITH THE WORK
D04	REMOVE EXISTING RECESSED TRASH AND PAPER TOWEL COMBO DISPENSER UNIT
D05	REMOVE ALL EXISTING SHELVING UNITS IN THEIR ENTIRETY
D06	REMOVE EXISTING DOOR, FRAME TO REMAIN. ALL COMPONENTS AS PART OF THE DOOR SYSTEM SHALL BE REMOVED, UNLESS NOTED OTHERWISE. PREP OPENING FOR NEW
D07	REMOVE ALL TOILET ACCESSORIES IN THEIR ENTIRETY, INCLUDING, BUT NOT LIMITED TO, GRAB BARS, MIRRORS, PAPER TOWEL DISPENSERS, TOILET PAPER DISPENSERS, SOAP DISPENSERS, AND WASTE RECEPTICALS. COORDINATE WITH THE WORK
D08	REMOVE EXISTING COUNTERTOP WITH BASE CABINET. COORDINATE WITH THE WORK
D09	REMOVE EXISTING SINK. MAINTAIN EXISTING PLUMBING LOCATION
D10	REMOVE EXISTING WALL CABINET. COORDINATE WITH THE WORK
D11	REMOVE EXISTING CEILING MOUNTED CURTAIN TRACK. COORDINATE WITH THE WORK
D12	REMOVE EXISTING REFRIGERATOR AND SALVAGE FOR POTENTIAL REUSE
D13	REMOVE EXISTING PLUMBING FIXTURE IN ITS ENTIRETY AND PREP FOR NEW. COORDINATE WITH THE WORK. REFERENCE PLUMBING DRAWINGS FOR ADDITIONAL INFORMATION
D15	EXISTING DOOR AND FRAME TO REMAIN
D16	EXISTING TOILET ACCESSORIES TO REMAIN, INCLUDING BUT NOT LIMITED TO, GRAB BARS, MIRRORS, PAPER TOWEL DISPENSERS, TOILET PAPER DISPENSERS, AND SOAP DISPENSERS
D17	REMOVE EXISTING WALL MOUNTED SOAP DISPENSER
D18	REMOVE DAMAGED PLASTER FINISH AT BEAMS, CEILING, AND WALLS BACK TO STABLE SUBSTRATE
D19	REMOVE EXISTING SECURITY DESK AND CHAIR
D20	TEMPORARY REMOVE AND REPLACE BENCH AND CAGE FOR EPOXY FLOORING
D21	REMOVE EXISTING DOOR AND FRAME IN ITS ENTIRETY. MAINTAIN OPENING FOR NEW PASSAGE OPENING, COORDINATE WITH THE WORK
D22	EXISTING ACCESS PANEL TO REMAIN
D23	EXISTING FIRE EXTINGUISHER TO REMAIN
D24	REMOVE EXISTING RECESSED SOAP DISPENSER
D25	REMOVE EXISTING WALL TILE. PREP WALL FOR NEW FINISH
D26	REMOVE AND REPLACE EXISTING MECHANICAL EXHAUST SYSTEM WITH NEW. SEE MECHANICAL DRAWINGS FOR ADDITIONAL INFORMATION
D27	EXISTING CONCRETE FLOOR. CLEAN AND PREP FOR NEW FLOOR FINISH
D28	REMOVE AND SALVAGE EXISTING METAL GATE CAGE AND DOOR FOR REUSE. PROTECT DURING CONSTRUCTION. COORDINATE WITH THE WORK
D29	EXISTING FENCE TO REMAIN
D30	PREP HATCHED AREA OF EXISTING CONCRETE FOR NEW RAMP ADDITION
D31	REMOVE EXISTING RUBBER BASE AND BOTTOM ROW OF WALL TILE FOR NEW EPOXY BASE. COORDINATE WITH THE WORK
D32	EXISTING WALL TILE TO REMAIN
D33	REMOVE AND DISCONNECT EXISTING MOP SINK, CAP BACK TO SOURCE. COORDINATE WITH PLUMBING
D34	REMOVE LOOSE PLASTER AND CONCRETE AT WATER DAMAGED AREAS (WALLS AND BEAMS) AS REQUIRED. PREP FOR REPAIR AND PATCH WORK
D35	REMOVE PORTION OF EXISTING GWB CEILING. COORDINATE WITH MECHANICAL DRAWINGS



Owner:
Schenectady County
612 State Street
Schenectady, NY 12305

Architect:
C2 Architecture
24 Airport Road
Schenectady, NY 12302

MEP:
M.E. Engineering
433 State Street
Schenectady, NY 12305

Stamp:

Project:
RENOVATIONS TO:
**SCHENECTADY COUNTY
JAIL MEDICAL**
320 Veeder Ave Schenectady, NY 12307

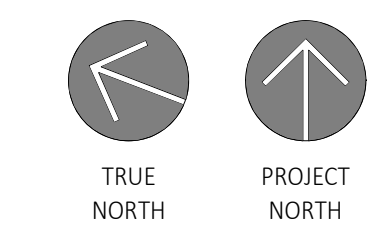
BID SET RFB 2024-52

No.	REVISION #	DATE:
1	Addendum #5	11/27/2024
4	Addendum #9	01/09/2025

Drawn By: C2 Architecture
Scale: As Noted
Date: 12/10/2024
Job No: 2412
Sheet Title:
**BASEMENT FLOOR
DEMOLITION PLAN**
Sheet Number:

D100
PLOT DATE: 1/8/2025 3:43:20 PM

1 Basement Demolition Plan
SCALE: 1/4" = 1'-0"



Copyright © 2024, C2 ARCHITECTURE, P.C. The material and ideas contained in this document are confidential and are the proprietary property of C2 ARCHITECTURE, P.C. These materials and ideas shall not be released or otherwise made available to any third party, or reproduced in whole or in part, without the express written consent of C2 ARCHITECTURE, P.C.

Finish Notes

1. **GENERAL:**
 - a. INTERIOR WALL AND CEILING FINISHES IN EXIT PASSAGEWAYS, CORRIDORS, AND ENCLOSURE FOR EXIT ACCESS STAIRWAYS SHALL BE CLASS B (26-75 FLAME SPREAD INDEX; 0-450 SMOKE-DEVELOPMENT INDEX) OR BETTER, WHEN TESTED IN ACCORDANCE WITH ASTM E84-2007 OR UL 723-2003
 - b. INTERIOR WALL AND CEILING FINISHES IN SPACES OTHER THAN THOSE NOTED ABOVE SHALL BE CLASS C (76-200 FLAME SPREAD INDEX; 0-450 SMOKE DEVELOPMENT INDEX) OR BETTER, WHEN TESTED IN ACCORDANCE WITH ASTM E84-2007 OR UL 723-2003
 - c. FLOOR FINISHES SHALL COMPLY WITH THE DOC FF-1 "PILL TEST" CPSC 160CFR PART 1630-2000
 - d. GC TO PROVIDE TOILET SIGNAGE AS REQUIRED BY THE IBC CHAPTER 11 (AS AMENDED BY THE STATE BUILDING CODE), TITLE 24 2016 CBC PART 2 VOLUME 1 SECTION 11B (OR AS AMENDED BY THE STATE ACCESSIBILITY CODE) AND IPC 403.4 (OR AS AMENDED BY THE STATE PLUMBING CODE). REFERENCE ACCESSIBILITY SHEET FOR GENERAL MOUNTING HEIGHTS AND LOCATIONS
 - e. REFERENCE LIFE SAFETY PLAN FOR NOTES RELATED TO COMBUSTIBLE MATERIALS AND PLYWOOD SUBSTRATES
2. **GENERAL WALL FINISH NOTES:**
 - a. WHERE EXISTING WALLS ARE TO BE RETAINED AND RE-USED, CONTRACTOR SHALL REPAIR, PATCH AND SAND WALLS AS REQUIRED TO MEET THE OWNERS INTENT AND ACCEPTABLE FOR INSTALLATION OF SPECIFIED FINISHES.
 - b. ALL WALLS SHALL BE TAPED AND FINISHED TO A LEVEL 4 STANDARD. IT IS THE RESPONSIBILITY OF THE GC TO INSPECT WALLS AS TAPING AND PATCHING OCCURS TO MEET THE LEVEL 4 STANDARDS AS OUTLINED IN BY THE GWB BOARD MANUFACTURER STANDARDS FOR LEVELS OF DRYWALL, GLASS MAT AND GYPSUM PANEL FINISH. IF THE OWNER FINDS A WALL TO BE UNSATISFACTORY – THE CONTRACTOR SHALL REPAIR THE WALL TO AN ACCEPTABLE LEVEL 4 STANDARD AT THE CONTRACTORS COST
 - FINAL APPEARANCE: NO MARKS OR RIDGES, READY FOR PRIMING
 - JOINTS AND INTERIOR ANGLES: MINIMUM OF 2 SEPARATE COATS OF COMPOUND ABOVE LEVEL 2 APPLICATION
 - ACCESSORIES & FASTENERS: THREE SEPARATE COATS OF COMPOUND
 - SURFACE: JOINTS FILLED AND SMOOTHED AGAIN. SHALL BE PRIMED WITH CGC FIRST COAT BEFORE PAINTING OR TEXTURING
 - c. PROVIDE CONTROL JOINTS IN WALLS WHICH EXTEND 30' OR GREATER IN LENGTH WITHOUT A JOINT. COORDINATE FINAL LOCATION WITH ARCHITECT.
3. **GENERAL PAINTING NOTES:**
 - a. PAINTS, COATINGS AND PRIMERS APPLIED TO INTERIOR WALL AND CEILINGS SHALL NOT EXCEED THE VOC CONTENT LIMITS ESTABLISHED IN GREEN SEAL STANDARD GS- 11 PAINTS, FIRST EDITION MAY 20, 1993.
 - FLATS 50 G/L
 - NON-FLATS 150 G/L
 - b. ANTI-CORROSIVE AND ANTI-RUST PAINTS APPLIED TO INTERIOR FERROUS METAL SUBSTRATES SHALL NOT EXCEED THE VOC LIMIT OF 250 G/L ESTABLISHED IN THE GREEN SEAL STANDARD GC-02, ANTI-CORROSIVE PAINTS, SECOND EDITION JANUARY 7, 1997
 - c. PROVIDE GRAY WALL PRIMER FOR DARK AND HEAVILY SATURATED COLORS
 - d. REFERENCE FINISH LEGEND FOR PAINT SELECTION SPECIFICATIONS
4. **GENERAL TILE NOTES:**
 - a. REFERENCE FLOOR FINISH LEGEND FOR TILE SELECTION AND TCNA STANDARD REFERENCE.
 - b. FLOOR PREPARATION
 - PREP FLOOR AS REQUIRED TO MEET THE INSTALLATION METHODS OF TCNA. INTENT IS FOR TILE TO BE INSTALLED OVER CONCRETE SUBSTRATE. IF A CONCRETE SUBSTRATE DOES NOT EXIST, INFORM THE ARCHITECT
 - IF THE SUBSTRATE IS A GYPCRETE FINISH, THE GYPCRETE MUST BE SEALED PRIOR TO ANY TILE INSTALLATION
 - FLOOR CRACKS SHALL BE FLASH PATCHED
 - c. ALL TILE SHALL BE INSTALLED PER TCNA STANDARDS
 - d. PROVIDE EXPANSION JOINTS AND OTHER SEALANT-FILLED JOINTS INCLUDING, CONTRACTOR AND ISOLATION JOINTS PER ALL CURRENT TCNA, E1171 STANDARDS. FORM JOINTS DURING INSTALLATION OF SETTING MATERIALS, MORTAR BEDS AND TILE. DO NOT SAW-CUT JOINTS AFTER INSTALLING TILES. COORDINATE FINAL LOCATIONS WITH ARCHITECT.
 - e. WHERE CONTROL JOINTS OCCUR IN THE SLAB, PROVIDE A 6" WIDE STRIP OF HYDRO-BAN ANTI-FRACTURE FABRIC OVER THE JOINT, AND INSTALL IN ACCORDANCE WITH TCNA STANDARDS
 - f. **ALL OTHER AREAS TO BE TILED:**
 - PROVIDE LIQUID APPLIED CRACK ISOLATION MEMBRANE IN ACCORDANCE WITH TCNA STANDARDS, AT ALL AREAS TO BE TILED
 - g. **GROUTS:**
 - PROVIDE CEMENTICIOUS GROUT AT ALL AREAS TO BE TILED UNLESS NOTED OTHERWISE BELOW
 - PROVIDE UNSANDED GROUT AT AREAS WHICH CONTAIN GLASS TILES
5. **WALLCOVERING NOTES:**
 - a. ALL WALLS TO RECEIVE A WALL COVERING FINISH SHALL BE FINISHED TO A LEVEL 4 MINIMUM STANDARD
 - b. WALL COVERING SHALL BE INSTALLED PER MANUFACTURER SPECIFICATIONS
 - c. CERTAIN COVERINGS CONTAIN AN 'A' AND 'B' PATTERN INSTALLATION. PROVIDE MOCK UP
6. **FLOORING NOTES:**
 - a. CONCRETE FLOORS SHALL BE PREPPED PER RESILIENT FLOORING MANUFACTURER STANDARDS.
 - b. FLOORS SHALL BE FLASH PATCHED TO ALLOW FOR FLUSH TRANSITIONS BETWEEN DISSIMILAR MATERIALS.

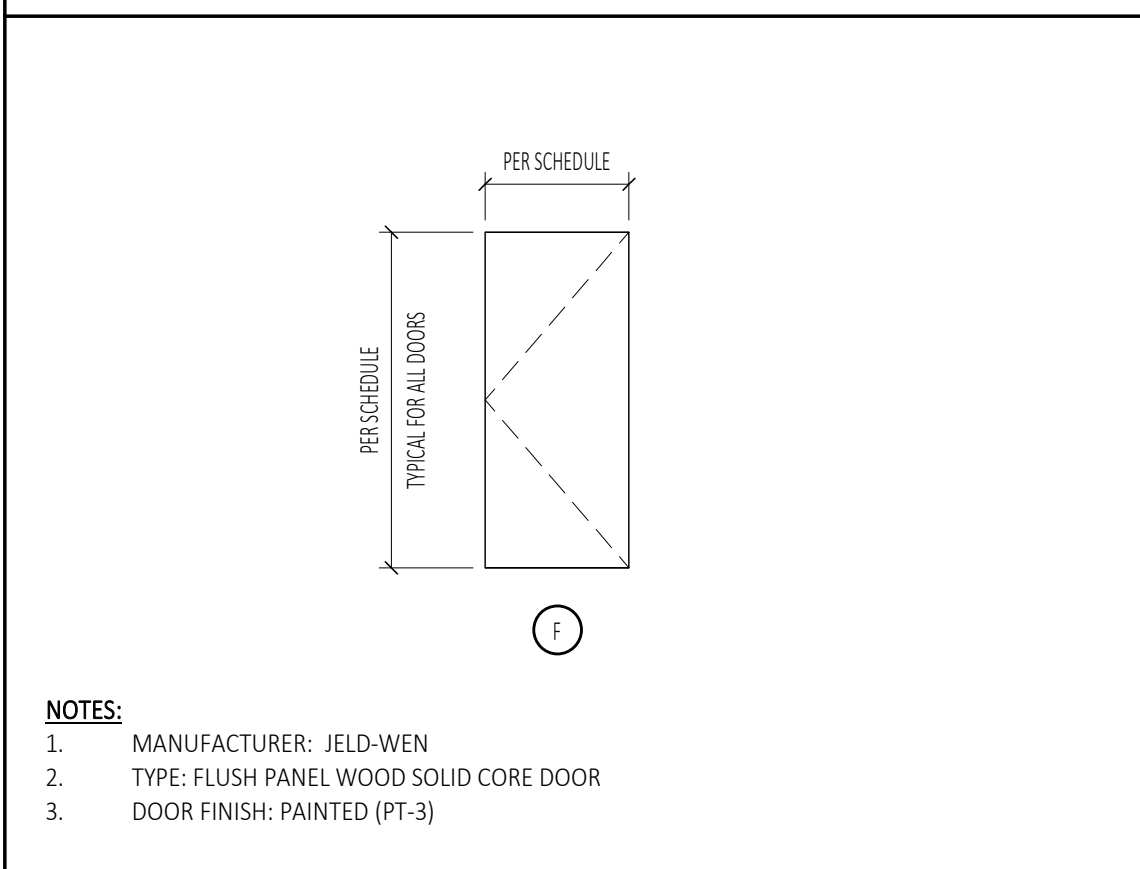
Door Schedule

Door No.	Location	DOOR												FRAME						Hardware	Rating	Comments	Door No.
		Width	Height	Thk.	Material	Finish	Type	Glazing	Material	Finish	Type	Head	Jamb	Sill									
001	NURSES OFFICE 017 / CORRIDOR 005	3'-0"	7'-0"	0'-1 3/4"	ETR	PT-3	ETR	ETR	ETR	ETR	ETR	ETR	ETR	ETR	-	ETR	-	EXISTING DOOR AND FRAME TO REMAIN, ADD FROSTED FILM ON GLASS	001				
001-A	METAL OFFICE 001-C / OPEN AREA 001-1	3'-0"	6'-8"	0'-1 3/4"	WD	PT-3	F	-	HM	PT-3	1	H1	J1	-	PRIVACY	-	FLUSH PANEL WOOD SOLID CORE DOOR	001-A					
001-B	STORAGE 001-B / EXISTING STORAGE SPACE	3'-0"	6'-8"	0'-1 3/4"	WD	PT-3	F	-	HM	PT-3	1	H1	J1	-	PRIVACY	-	FLUSH PANEL WOOD SOLID CORE DOOR	001-B					
002	NURSES TOILET 016 / NURSES WORK AREA 011	3'-0"	7'-0"	0'-1 3/4"	ETR	PT-3	ETR	-	ETR	ETR	ETR	ETR	ETR	ETR	-	ETR	-	EXISTING DOOR AND FRAME TO REMAIN	002				

Finish Schedule

Room Number	Room Name	Floor		North Wall			East Wall			South Wall			West Wall			Ceiling		Comments
		Material	Finish	Material	Finish	Base	Material	Finish	Base	Material	Finish	Base	Material	Finish	Base	Material	Finish	
001	ENTRANCE CORRIDOR	CONC	EP-1	ETR	PT-1	EP-1	ETR	PT-1	EP-1	ETR	PT-1	EP-1	ETR	PT-1	EP-1	ETR	PT-2	
001-A	OPEN AREA	CONC	ETR	ETR	ETR	ETR	ETR	ETR / PT-1	ETR / RB-1	ETR	ETR	ETR	ETR	ETR	ETR	ETR	PT-2	
001-B	STORAGE	CONC	ETR	GWB	PT-1	RB-1	GWB	PT-1	RB-1	ETR	PT-3	RB-1	GWB	PT-1	RB-1	ETR	PT-2	
001-B	NURSES AREA	CONC	ETR	-	-	-	-	-	-	ETR	ETR	ETR	ETR	ETR	ETR	ETR	PT-2	
001-C	MENTAL OFFICE	CONC	ETR	GWB	PT-1	RB-1	GWB	PT-1	RB-1	GWB	PT-1	RB-1	GWB	PT-1	RB-1	ETR	PT-2	
001-D	HOLDING 1	CONC	ETR	-	-	-	-	-	-	ETR	ETR	ETR	ETR	ETR	ETR	ETR	PT-2	
001-E	HOLDING 2	CONC	ETR	-	-	-	-	-	-	ETR	ETR	ETR	ETR	ETR	ETR	ETR	PT-2	
002	GUARD DESK AREA	CONC	EP-1	ETR	PT-1	EP-1	ETR	PT-1	EP-1	ETR	PT-1	EP-1	ETR	PT-1	EP-1	ETR	PT-2	
003	HOLDING AREA 1	CONC	EP-1	ETR	PT-1	EP-1	ETR	PT-1	EP-1	ETR	PT-1	EP-1	ETR	PT-1	EP-1	ETR	PT-2	
004	HOLDING AREA 2	CONC	EP-1	ETR	PT-1	EP-1	ETR	PT-1	EP-1	ETR	PT-1	EP-1	ETR	PT-1	EP-1	ETR	PT-2	
005	CORRIDOR	CONC	EP-1	ETR	PT-1	EP-1	ETR	PT-1	EP-1	ETR	PT-1	EP-1	ETR	PT-1	EP-1	ETR	PT-2	
006	MAIN MEDICAL EXAM SUITE	CONC	EP-1	ETR	PT-5	EP-1	ETR	WC-1	EP-1	ETR	PT-5	EP-1	ETR	PT-5	EP-1	ETR	PT-2	
007	EQUIPMENT STORAGE	CONC	EP-1	ETR	PT-1	EP-1	ETR	PT-1	EP-1	ETR	PT-1	EP-1	ETR	PT-1	EP-1	ETR	PT-2	
008	NARCOTICS STORAGE	CONC	EP-1	ETR	PT-1	EP-1	ETR	PT-1	EP-1	ETR	PT-1	EP-1	ETR	PT-1	EP-1	ETR	PT-2	
009	DIR. NURSE WORK AREA	CONC	EP-1	ETR	PT-1	EP-1	ETR	PT-1	EP-1	ETR	PT-1	EP-1	ETR	PT-1	EP-1	ETR	PT-2	
010	MECH./STORAGE	CONC	EP-1	ETR	PT-1	EP-1	ETR	PT-1	EP-1	ETR	PT-1	EP-1	ETR	PT-1	EP-1	ETR	PT-2	
011	NURSES WORK AREA	CONC	EP-1	ETR	PT-1	EP-1	ETR	PT-1	EP-1	ETR	PT-1	EP-1	ETR	PT-1	EP-1	ETR	PT-2	
012	KITCHENETTE	CONC	EP-1	ETR	PT-1	EP-1	ETR	PT-1	EP-1	ETR	PT-1	EP-1	ETR	PT-1	EP-1	ETR	PT-2	
013	EXTERIOR STORAGE	-	-	-	-	-	-	-	-	-	-	-	-	-	-	-	-	
014	PASSAGEWAY	CONC	EP-1	ETR	PT-1	EP-1	ETR	PT-1	EP-1	ETR	PT-1	EP-1	ETR	PT-1	EP-1	ETR	PT-2	
015	INMATES TOILET	CONC	EP-1	ETR	ETR	ETR	ETR	ETR	ETR	ETR	ETR	ETR	ETR	ETR	ETR	ETR	PT-2	
016	NURSES TOILET	CONC	EP-1	ETR	WT-1	WT-1	ETR	WT-1	WT-1	ETR	WT-1	WT-1	ETR	WT-1	WT-1	ETR	PT-2	
017	NURSES OFFICE	CONC	EP-1	ETR	PT-1	EP-1	ETR	PT-1	EP-1	ETR	PT-1	EP-1	ETR	PT-1	EP-1	ETR	PT-2	
018	MENS EXAM	CONC	EP-1	ETR	PT-1	EP-1	ETR	PT-1	EP-1	ETR	PT-1	EP-1	ETR	PT-1	EP-1	ETR	PT-2	
019	MENTAL HEALTH EXAM	CONC	EP-1	ETR	PT-1	EP-1	ETR	PT-1	EP-1	ETR	PT-1	EP-1	ETR	PT-1	EP-1	ETR	PT-2	

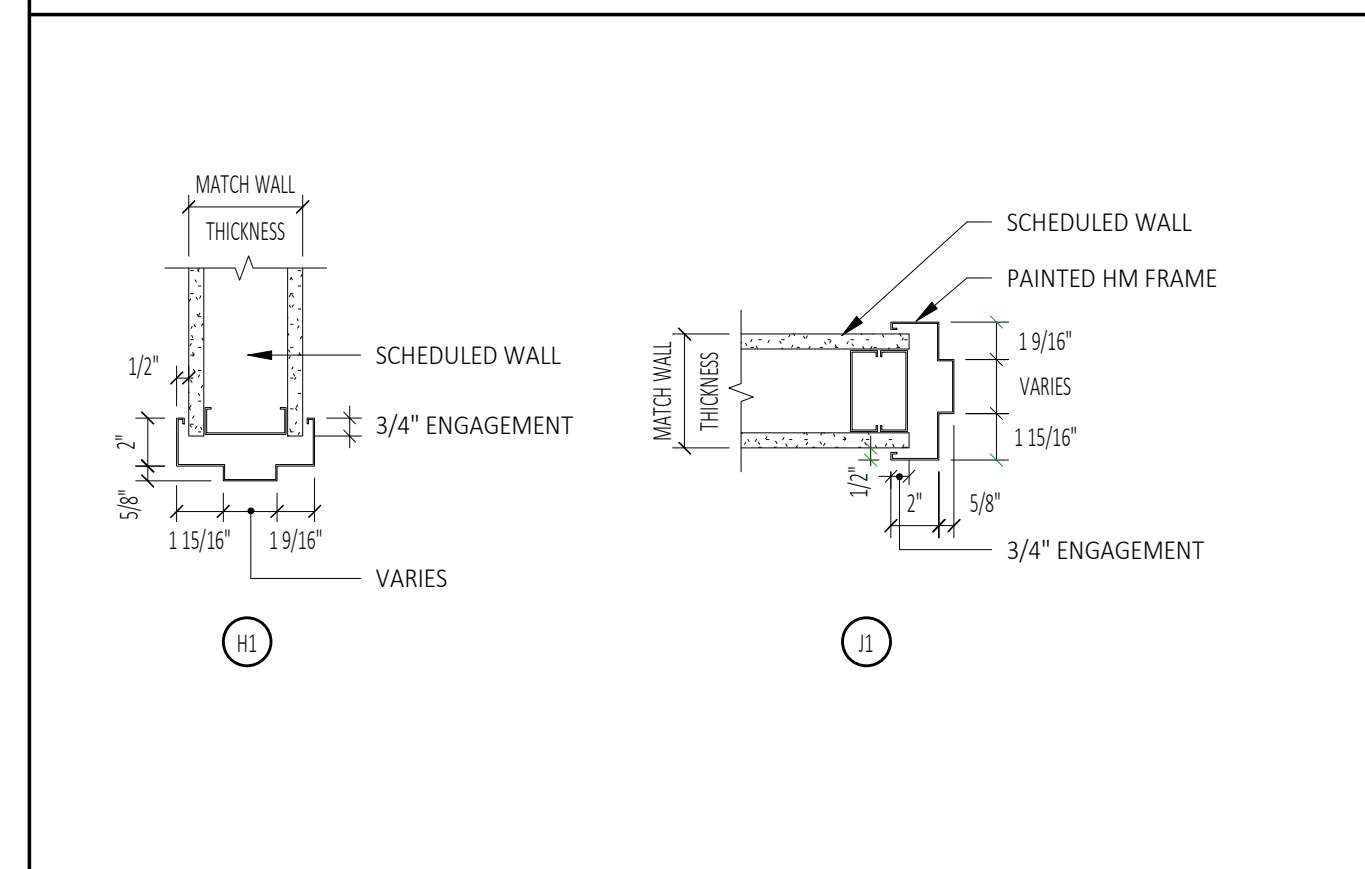
Door Types



Hardware Schedule

- GENERAL HARDWARE NOTES:**
1. HARDWARE SETS LISTED ARE TO BE USED AS A BASIS OF DESIGN AND ARE NOT ALL INCLUSIVE OF COMPONENTS NEEDED FOR A FULLY FUNCTIONAL HARDWARE SET. GC SHALL PROVIDE SUBMITTAL FOR OWNER APPROVAL, FOR FULLY FUNCTIONAL SET. FINAL SELECTIONS SHALL BE APPROVED BY THE TENANT.
 2. COORDINATE KEYING WITH OWNER PRIOR TO ORDERING
 3. INTERIOR HARDWARE SHALL BE GRADE 2.
 4. DOOR LEVERS SHALL BE LEVER STYLE, SIMILAR TO SCHLAGE JUPITER 626 (US260)
- PASSAGE (F75):**
- (3) EA STANDARD HINGES
 - (1) EA LEVER SET
 - (1) EA WALL STOP
 - (3) EA SILENCERS, COLOR TO MATCH FRAME
- PRIVACY (F76):**
- (3) EA STANDARD HINGES
 - (1) EA LEVER SET
 - (1) EA WALL STOP
 - (3) EA SILENCERS, COLOR TO MATCH FRAME

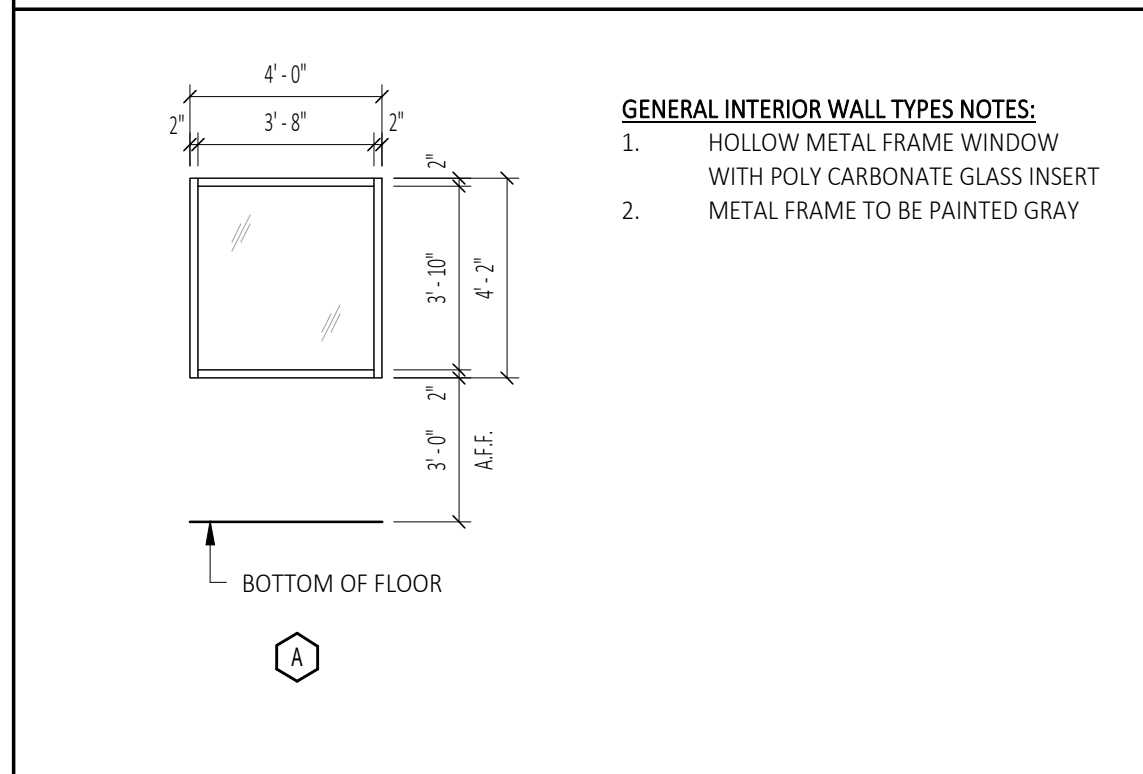
Jamb Details



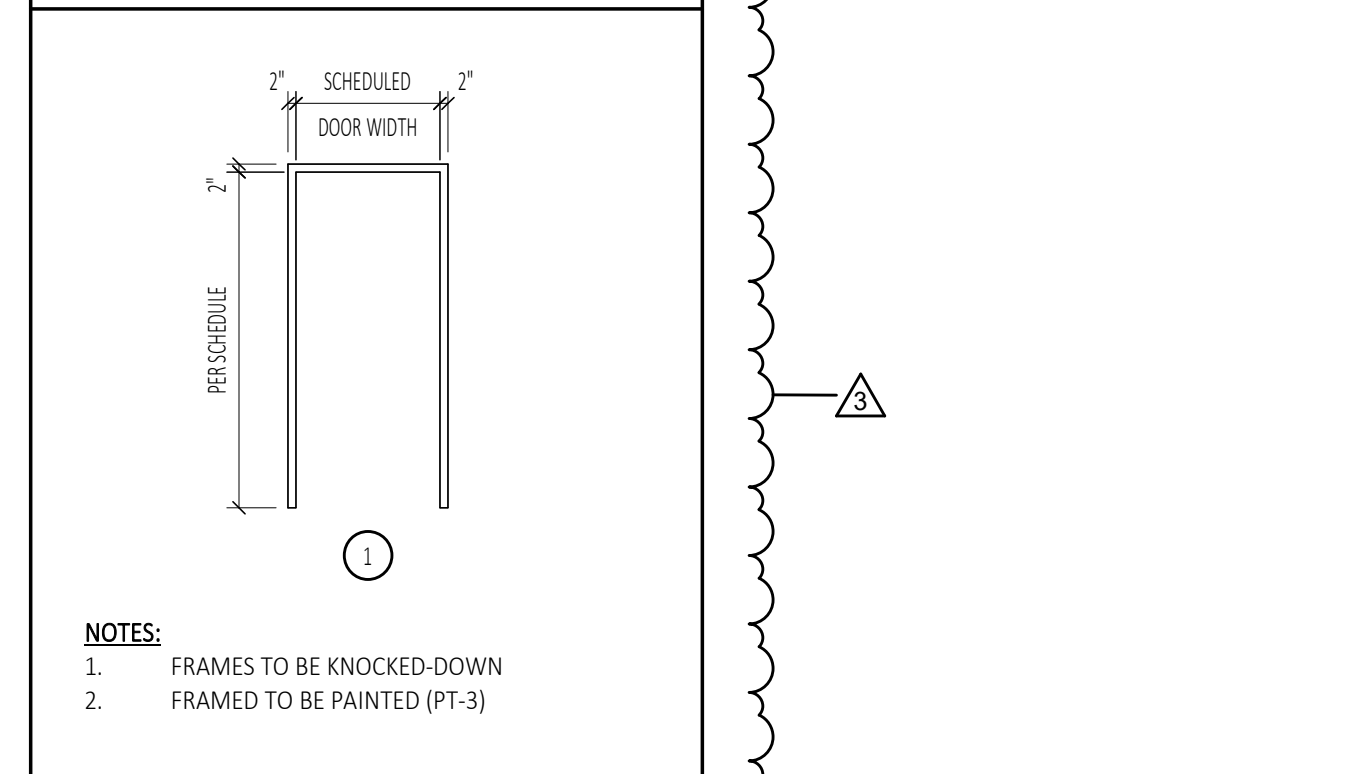
Resinous Flooring Notes

- NEW WORK SURFACE PREPARATION (ALL RESINOUS FLOORING)**
- a. REMOVE, REPAIR, AND PATCH ALL AREAS OF DAMAGED OR NON DURABLE CONCRETE IN SCOPE OF WORK FOR ALL PHASES
 - b. REPAIR AND PATCH ALL AREAS OF SURFACE IRREGULARITIES SUCH AS, BUT NOT LIMITED TO: CRACKS, HOLES, AND JOINTS DAMAGE PRIOR TO PREPPING SURFACE FOR NEW FINISH
 - c. REMOVE ALL CONTAMINANTS ON ALL CONCRETE SURFACES WITHIN SCOPE OF WORK AREAS, INCLUDING BUT NOT LIMITED TO: PAINT, OIL, WAX, DEBRIS, ETC. PRIOR TO PREPPING THE SURFACE FOR NEW FINISH
 - d. PROVIDE REQUIRED SURFACE PROFILE AS RECOMMENDED BY NEW FLOORING MANUFACTURER WORK NOT LIMITED TO: GRINDING, BLAST CLEANING, AND SCARIFYING, ETC.
 - e. GRIND ALL EXISTING TERRAZZO SURFACES AND PREP FOR NEW WORK
 - f. CONTRACTOR SHALL BE RESPONSIBLE TO LOCATE AND IDENTIFY ALL CONSTRUCTION JOINTS AND CRACK ISOLATION JOINTS. ALL CONTROL JOINTS AND EXPANSION JOINTS ARE TO BE HONORED AND MAINTAINED.
 - g. PREPARE ALL EXISTING FLOOR TYPES FLUSH WITH OTHER ADJACENT FLOORS IN SCOPE AREA AND/OR ROOM. PREP AS REQUIRED FOR NEW FLOOR FINISH.
 - h. RESINOUS FLOORING FINISH SHALL BE INSTALLED PER SPECIFICATIONS AND APPROVED MANUFACTURER'S RECOMMENDATIONS

Interior Glass Wall Types



Frame Types



Owner:
Schenectady County
612 State Street
Schenectady, NY 12305

Architect:
C2 Architecture
24 Airport Road
Schenectady, NY 12302

MEP:
M.E. Engineering
433 State Street
Schenectady, NY 12305

Stamp:

Project:
**RENOVATIONS TO:
SCHENECTADY COUNTY
JAIL MEDICAL**
320 Veeder Ave Schenectady, NY 12307

BID SET RFB 2024-52		
No.	REVISION #	DATE:
3	Addendum #6	12/12/2024
4	Addendum #9	01/09/2025

Drawn By: C2 Architecture
Scale: As Noted
Date: 12/10/2024
Job No: 2412
Sheet Title:

SCHEDULES
Sheet Number:
A900

Copyright © 2024, C2 ARCHITECTURE, PC. The material and ideas contained in this document are confidential and are the proprietary property of C2 ARCHITECTURE, PC. These materials and ideas shall not be released or otherwise made available to any third party, or reproduced in whole or in part, without the express written consent of C2 ARCHITECTURE, PC.

Finish Legend

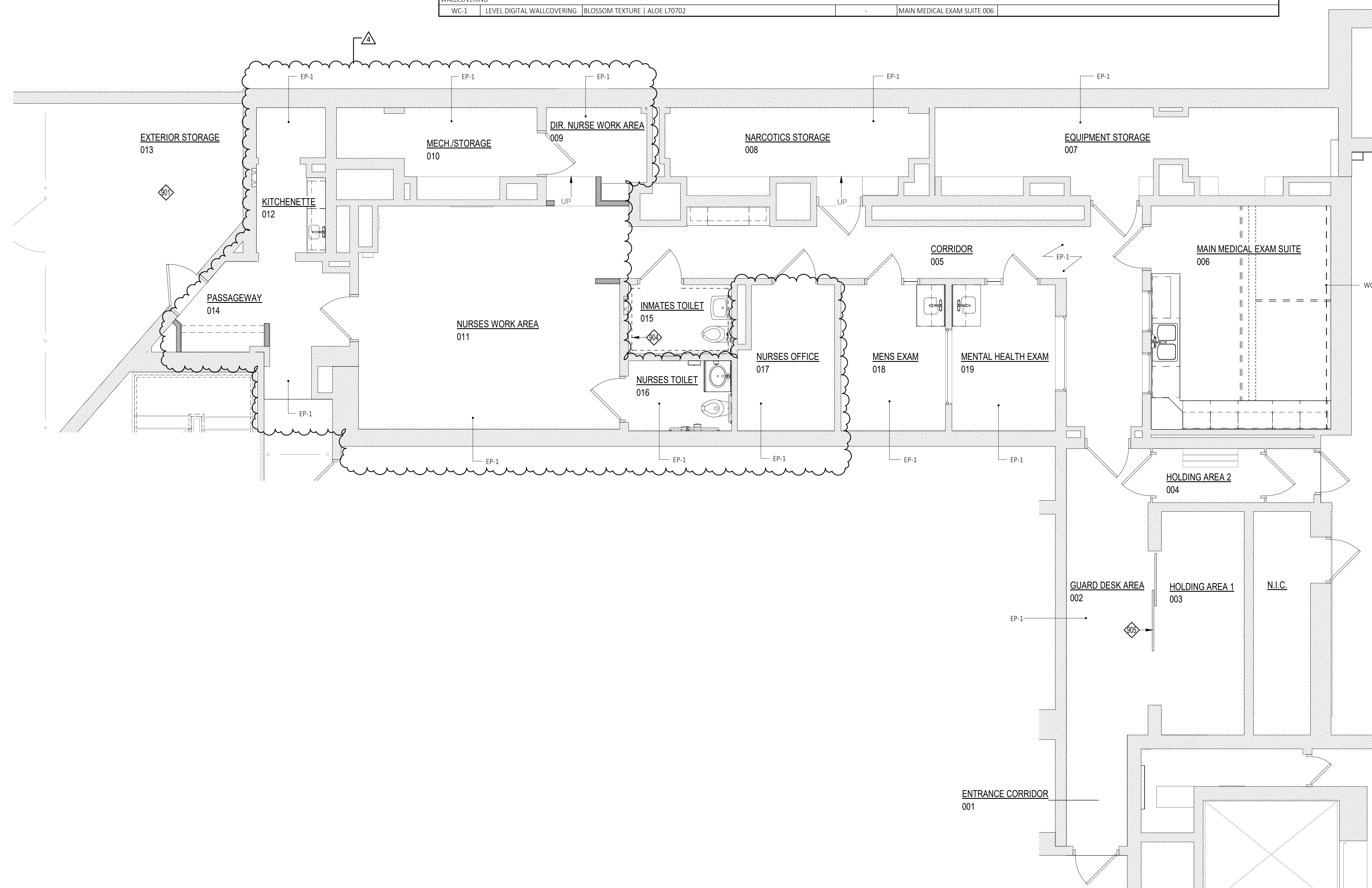
Finish No.	Manufacturer	Series Style Color	Size	Location	Notes
EPOXY					
EP-1	SHERWIN WILLIAMS	DUR-A-FLEX ELLADUR 4850 PAVESTONE SW7642			PROVIDE SHARKGRIP SLIP RESISTANCE. INCLUDE 4" EPOXY BASE UNLESS NOTED OTHERWISE
FLOOR TILE					
FT-1	BEST TILE	CAESAR CERAMICS PATHWAY WIND (GROUT: LATICRETE-STERLING SILVER 78)	24" X 24"	NURSES TOILET 016	
PAINT					
PT-1	SHERWIN WILLIAMS	GOSSAMER VEIL SW 9165	-	FIELD	EGGSHELL FINISH
PT-2	SHERWIN WILLIAMS	PURE WHITE SW 7005	-	CEILING	FLAT FINISH
PT-3	SHERWIN WILLIAMS	BACKDROP SW 7025	-	DOOR FRAME, DOOR	SEMI-GLOSS FINISH
PT-4	SHERWIN WILLIAMS	PAVESTONE SW 7642	-	FLOOR (MECH./STORAGE 010)	
PLASTIC LAMINATE					
PL-1	WILSONART	FAWN CYPRESS 8208K-16	-		
PL-2	WILSONART	GREY MESH 4877-38	-		
PRIVACY CURTAIN					
PC-1	INPRO	WINDMILL HERBAL (INCLUDE SNAP TAPE AND 20" EZE-MESH IN SNOW)	-		CURTAIN FOR CURTAIN TRACK INCLUDE SNAP TAPE EZE-MESH
RESILIENT FLOORING					
RF-1	NOT USED	NOT USED	NOT USED		
RUBBER BASE					
RB-1	ROPPE	VINYL WALL BASE BURNT UMBER 194	4" X 120" LONG		
SOLID SURFACE					
SS-1	WILSONART SOLID SURFACE	FROSTY WHITE 1573SL	-		
TRANSITION STRIP					
TS-1	SCHLUTER	RENO-U SATIN ANODIZED ALUMINUM	V.I.F.		
TS-2	SCHLUTER	VINPRO-U BRUSHED CHROME ANODIZED ALUMINUM	V.I.F.		
WALL TILE					
WT-1	BEST TILE	CAESAR CERAMICS STYLE PURE (GROUT: LATICRETE - SMOKE GREY 89)	12" X 24"	NURSES TOILET 016	
WT-2	MARAZZI	INYO CREMA IN70 (GROUT: LATICRETE-FOSSIL 93)	2" X 8"	KITCHENETTE 012	
WALLCOVERING					
WC-1	LEVEL DIGITAL WALLCOVERING	BLOSSOM TEXTURE ALOE L70702	-	MAIN MEDICAL EXAM SUITE 006	

Finish Plan Keynote Legend

901	EXISTING FLOOR FINISH TO REMAIN
902	TRANSITION STRIP (TS-1)
903	TRANSITION STRIP (TS-2)
904	INSTALL 6" EPOXY BASE AS SHOWN IN THE DASHED LINE. COORDINATE WITH THE WORK
905	EXISTING HOLDING AREA BARS TO BE PAINTED (PT-1)

General Finish Notes

- ALL EXISTING METAL DOOR FRAMES TO BE PAINTED (PT-3)
- ALL EXISTING METAL DOORS TO BE PAINTED (PT-3)



Owner:
 Schenectady County
 612 State Street
 Schenectady, NY 12305

Architect:
 C2 Architecture
 24 Airport Road
 Schenectady, NY 12302

MEP:
 M.E. Engineering
 433 State Street
 Schenectady, NY 12305

Stamp:

Project:
 RENOVATIONS TO:
**SCHENECTADY COUNTY
 JAIL MEDICAL**
 320 Veeder Ave Schenectady, NY 12307

BID SET RFB 2024-52

No.	REVISION #	DATE:
4	Addendum #9	01/09/2025

Drawn By: C2 Architecture
 Scale: As Noted
 Date: 12/10/2024
 Job No: 2412
 Sheet Title:
FINISH PLAN
 Sheet Number:
A901

