

RFB-2023-40

SUNY
SCHENECTADY
COUNTY COMMUNITY COLLEGE

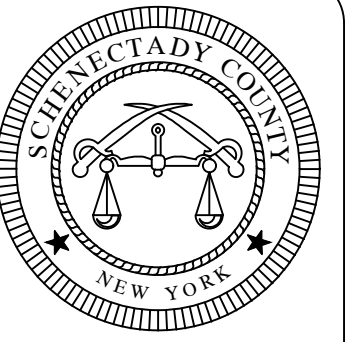
SUNY SCHENECTADY
CHEMISTRY LAB
RENOVATION

BASE BID:

1. DEMOLITION, DELIVERY, AND INSTALLATION OF FURNITURE IN CHEM LAB 202

ADD ALTERNATES:

1. DEMOLITION, DELIVERY, AND INSTALLATION OF FURNITURE IN THE INSTRUMENT ROOM.
2. PRICE FOR 15 SITTING STOOLS.
3. PRICE FOR 3 SITTING CHAIRS.



Unauthorized alteration or addition to this document is a violation of Section 7209 (2) of New York State Education Law.

Schenectady County Office of Facilities

SUNY Schenectady Chemistry Lab Renovation
60 Washington Ave Schenectady NY 12305

Drawn by:

Checked by:

Project No.:
RFB-2023-40

CAD File:

Date:
March 2023

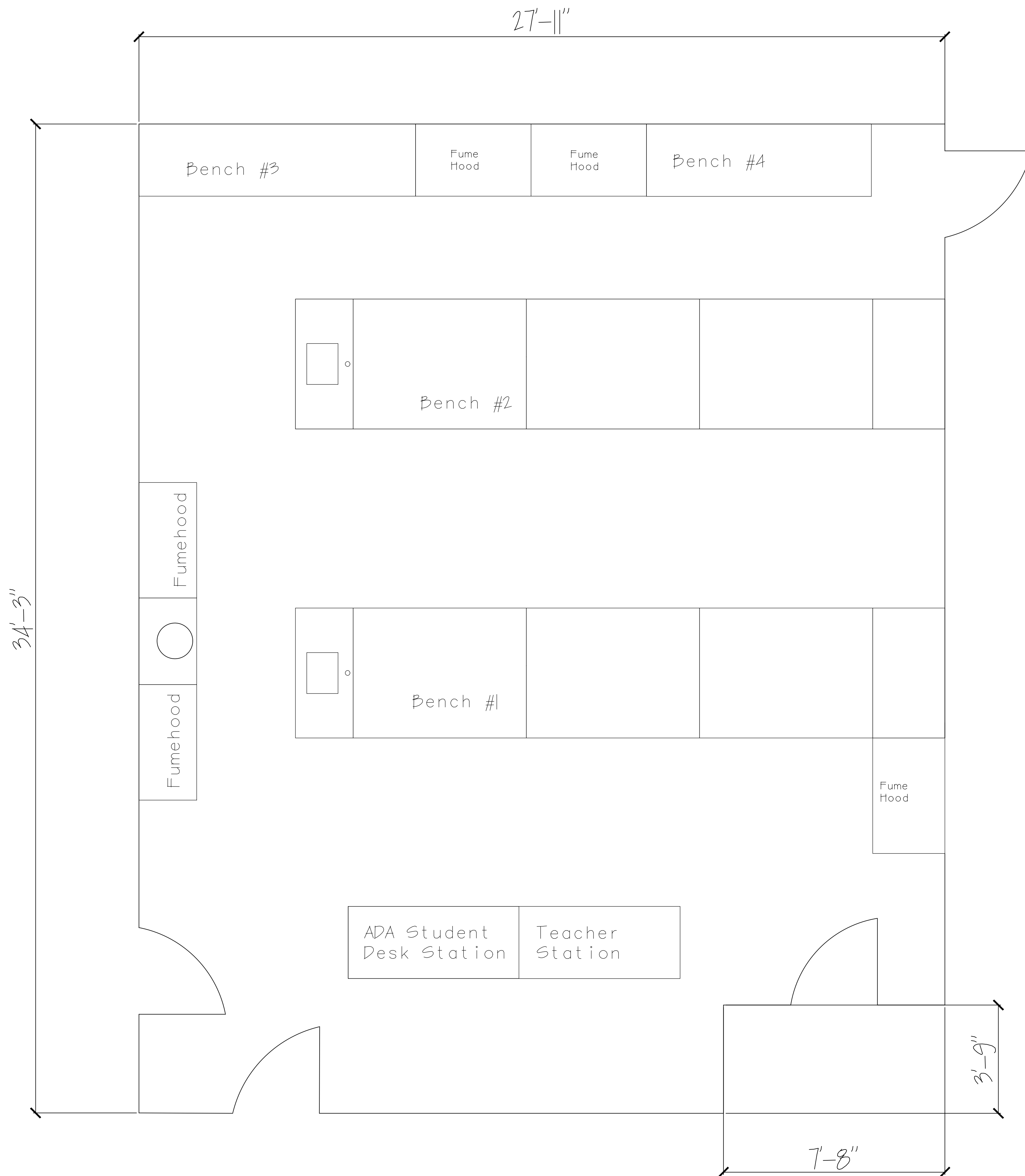
Title:
TITLE BLOCK

Scale: Not to Scale
Drawing No.:

TITLE

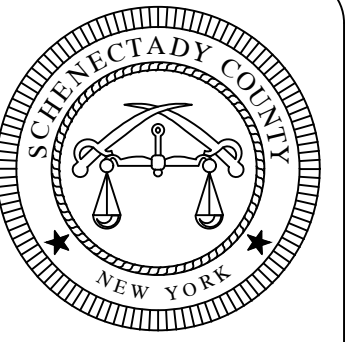
Updated Drawings 3/28/23

CHEM LAB 202



General Notes:

1. Contractor is responsible for all final measurements.
2. Dimensions provided are for reference only.
3. Any measurements are to be field verified including chem lab accessory locations prior to order placement.
4. Shop drawings are to be provided and approved by Schenectady County and Schenectady County Community College prior to order placement.
5. Countertops are to be Black Phenolic Resin. Chemical Resistant.
6. Sinks are to be Black Epoxy Sinks unless otherwise noted.
7. Small oval epoxy sinks are approximately 7"x4" unless otherwise noted.
8. Faucets are $\frac{3}{4}$ " unless otherwise noted.
9. All Faucets, valves, electrical receptacles, and data receptacles are to be replaced unless otherwise noted.
10. 22-1/2" Deep Cabinets typical unless otherwise noted.
11. Vinyl base is to be the color black.
12. All drawers and cabinet doors must be lockable with 1 master key.



Unauthorized alteration or addition to this document is a violation of Section 7209 (2) of New York State Education Law.

Schenectady County Office of Facilities

SUNY Schenectady Chemistry Lab Renovation
60 Washington Ave Schenectady NY 12305

Drawn by:

Checked by:

Project No.:
RFB-2023-40

CAD File:

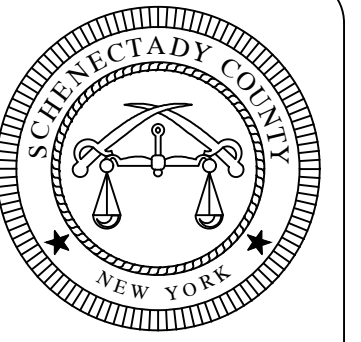
Date:
March 2023

Title:
Floor Plan
Chem Lab 202

Scale: Not to Scale

Drawing No.:

A-1



Unauthorized alteration or addition to this document is a violation of Section 7209 (2) of New York State Education Law.

Schenectady County Office of Facilities
SUNY Schenectady Chemistry Lab Renovation
60 Washington Ave Schenectady NY 12305

Drawn by:

Checked by:

Project No.:
RFB-2023-40

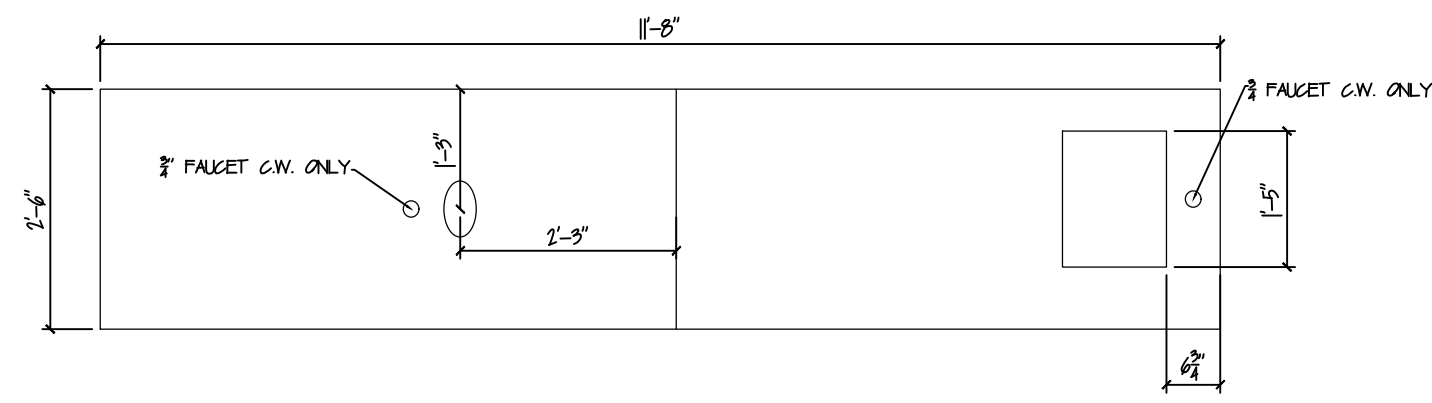
CAD File:

Date:
March 2023

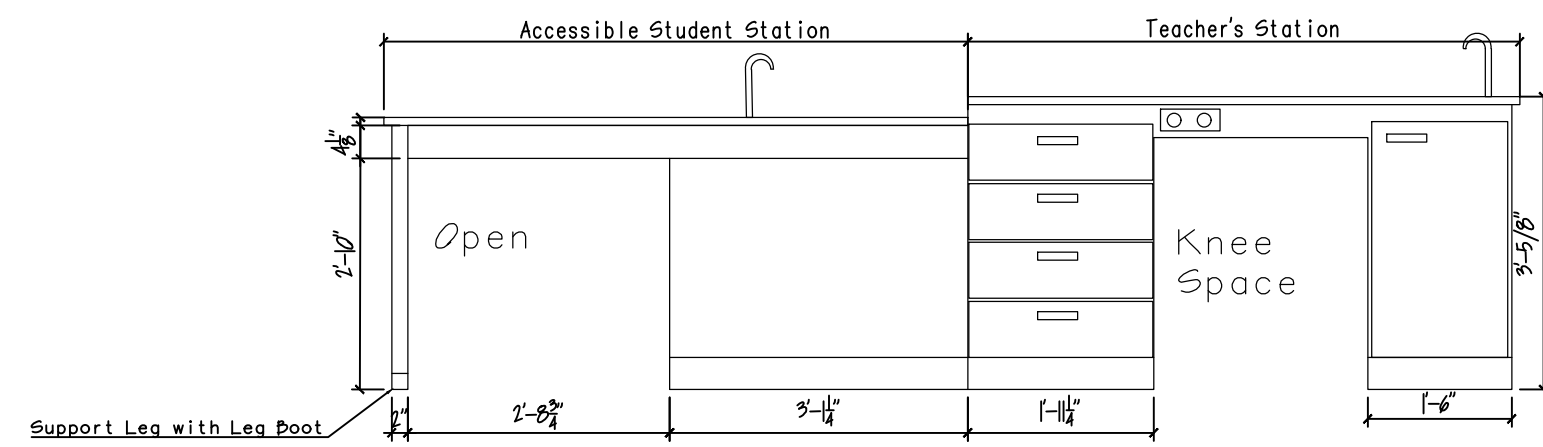
Title:
Cabinet Details
Chem Lab 202

Scale: Not to Scale
Drawing No.:

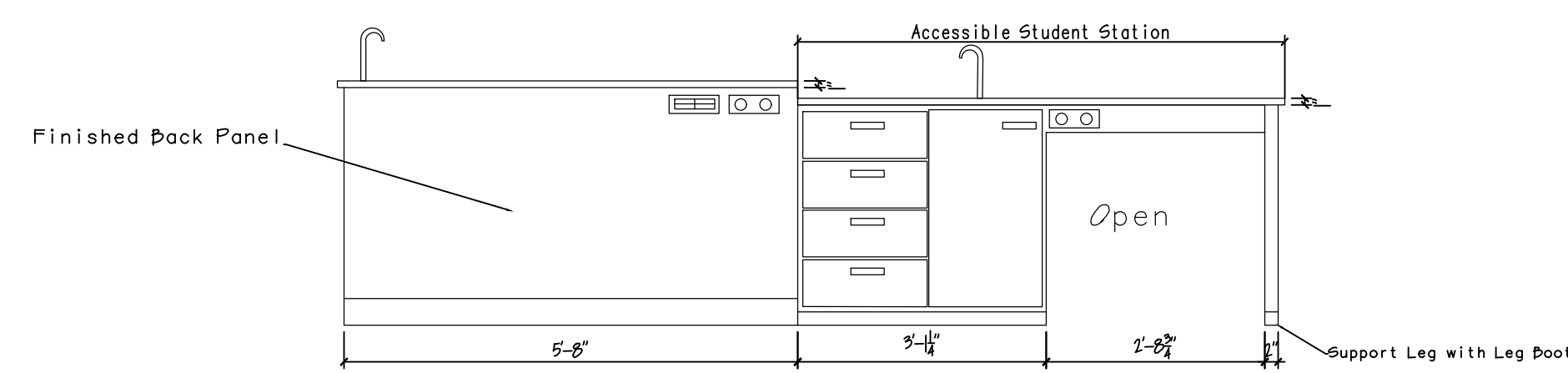
A-2



Top View

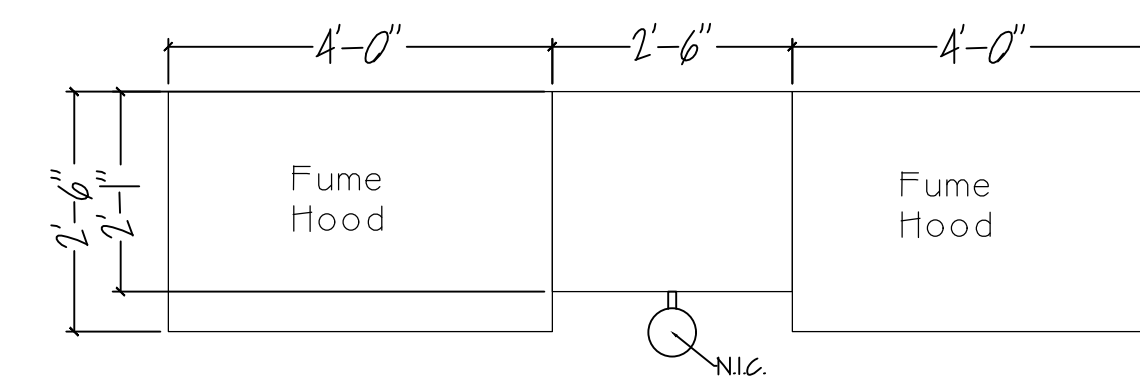


North View

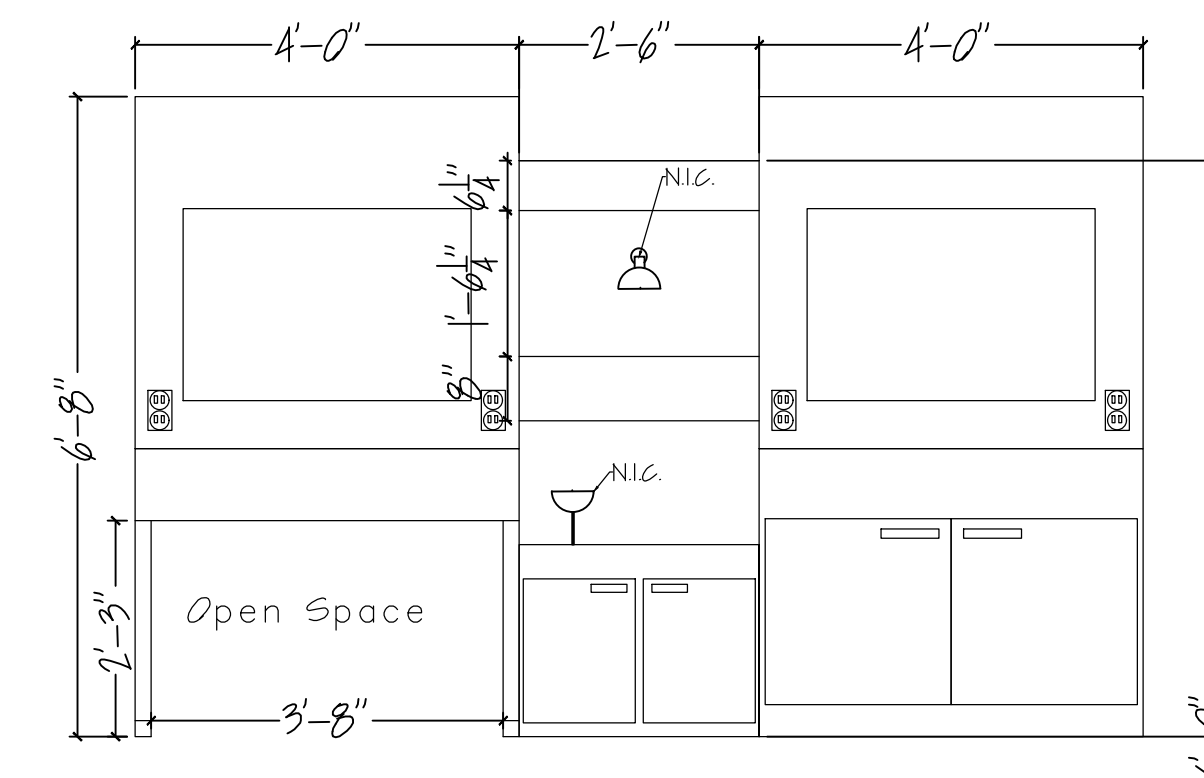


South View

Accessible Student/Teacher Station

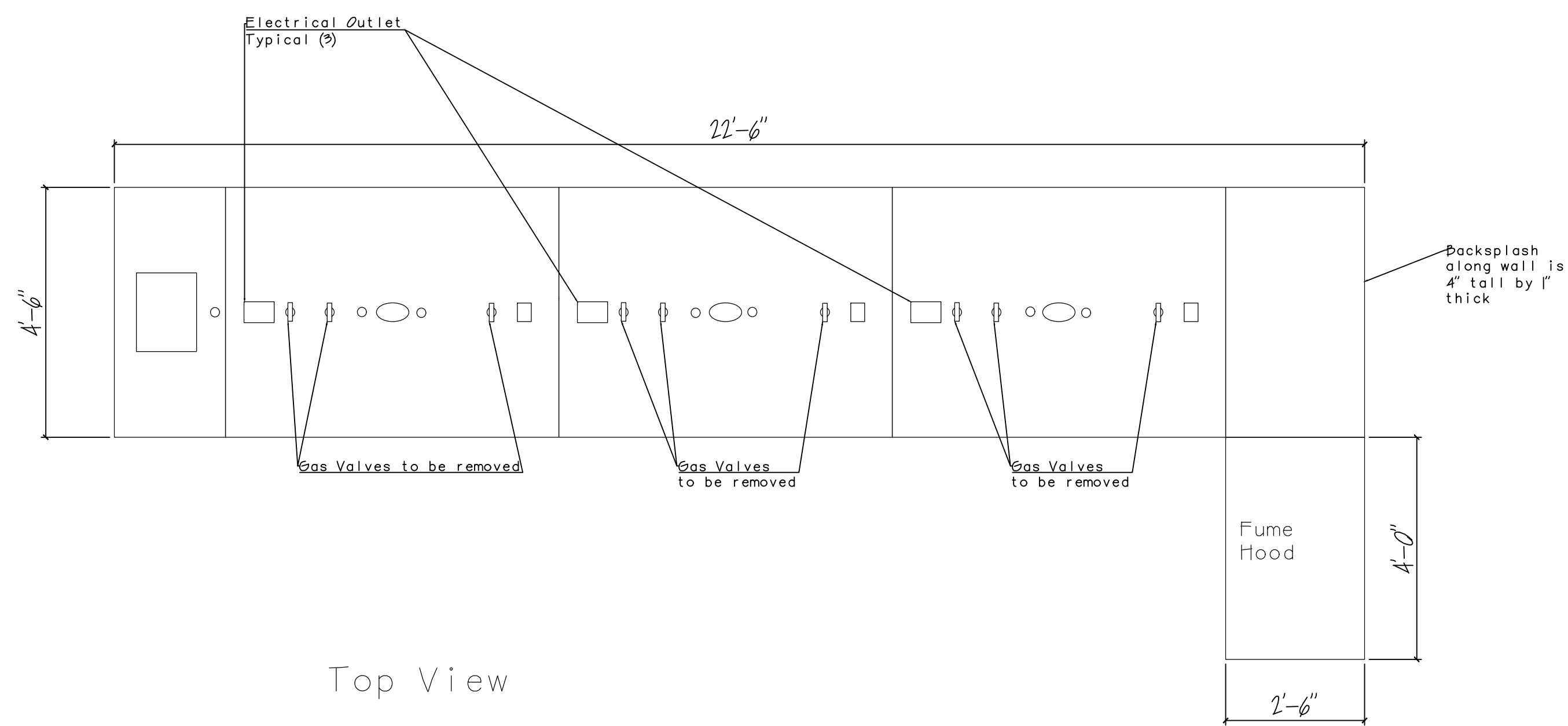


Top View

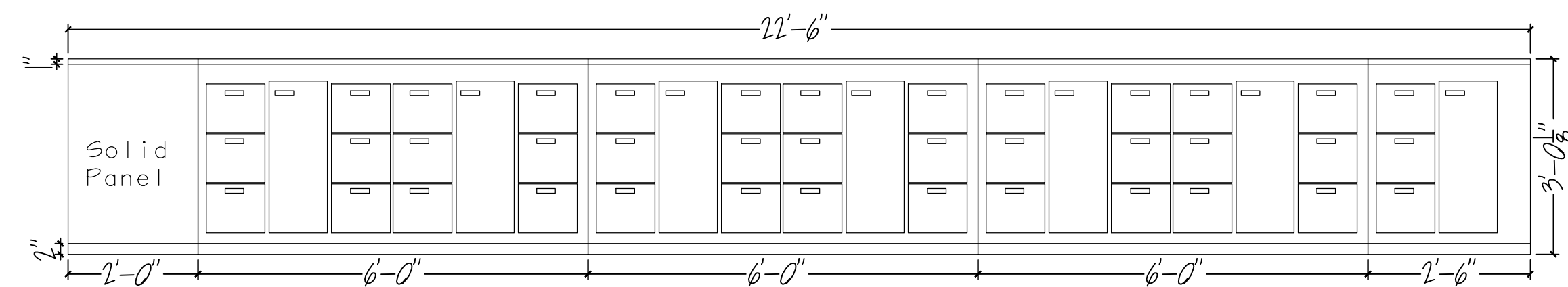


North View

Emergency Shower Shelving Case

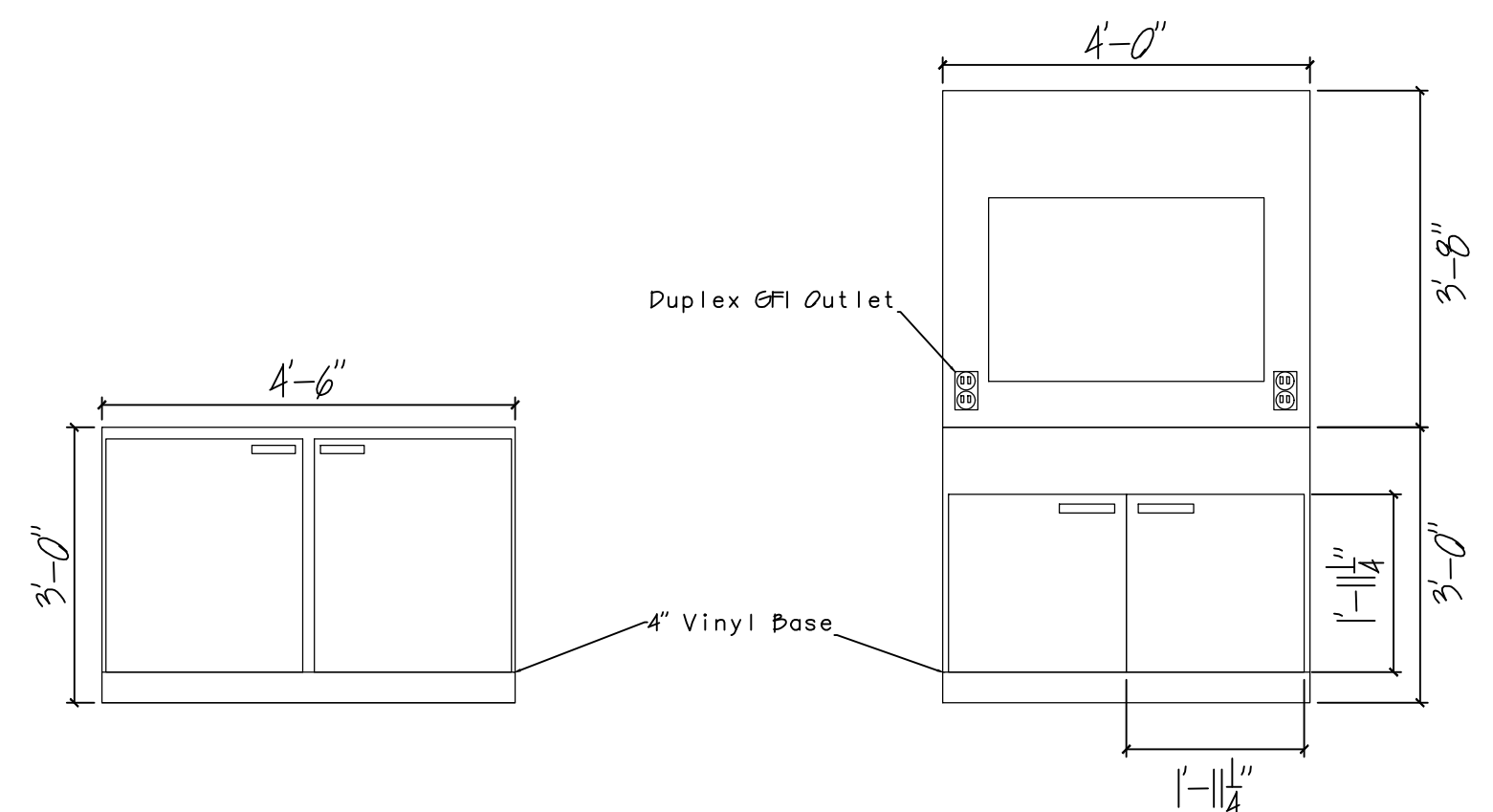


Top View



North & South View

Bench #

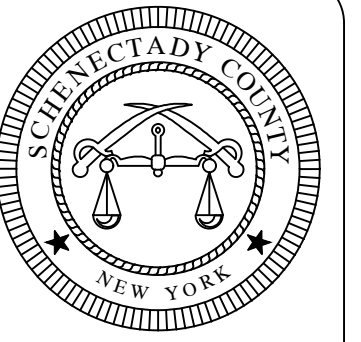


Side/West View

Side/West (Fume Hood) View

General Notes:

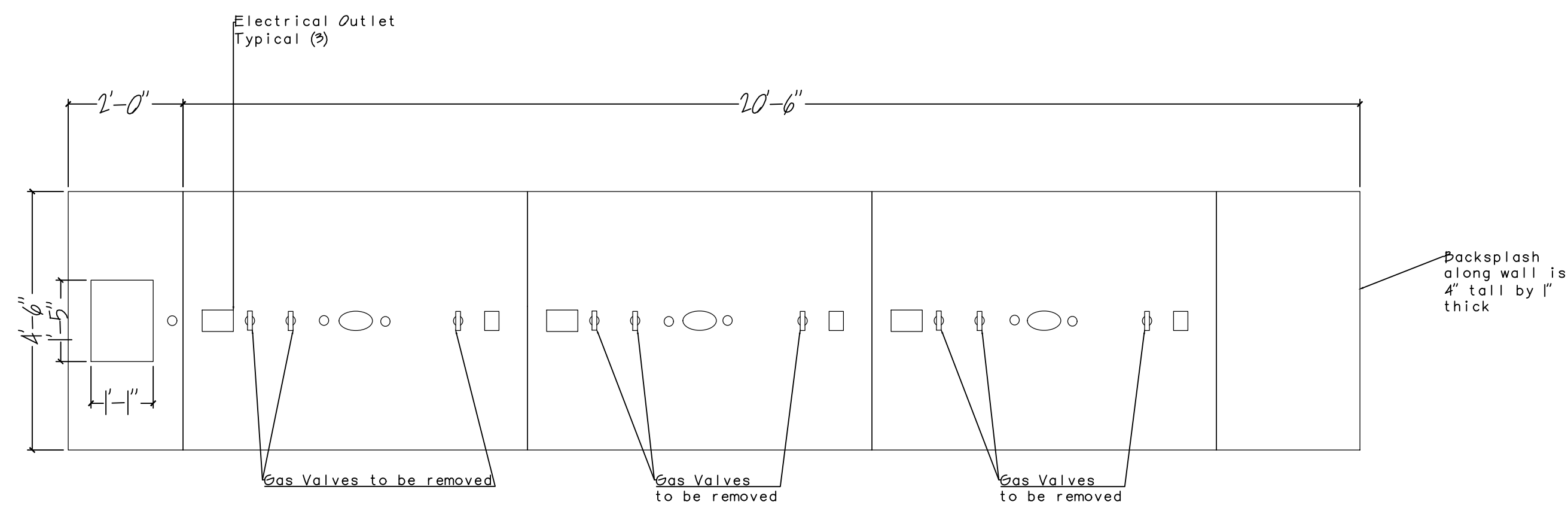
1. Contractor is responsible for all final measurements.
2. Dimensions provided are for reference only.
3. Any measurements are to be field verified including chem lab accessory locations prior to order placement.
4. Shop drawings are to be provided and approved by Schenectady County and Schenectady County Community College prior to order placement.
5. Countertops are to be Black Phenolic Resin.
6. Sinks are to be Black Epoxy Sinks unless otherwise noted.
7. Small oval epoxy sinks are approximately 7"x4" unless otherwise noted.
8. Faucets are 3/4" unless otherwise noted.
9. All Faucets, valves, electrical receptacles, and data receptacles are to be replaced unless otherwise noted.
10. 22-1/2" Deep Cabinets typical unless otherwise noted.
11. Vinyl base is to be the color black.
12. All drawers and cabinet doors must be lockable with 1 master key.



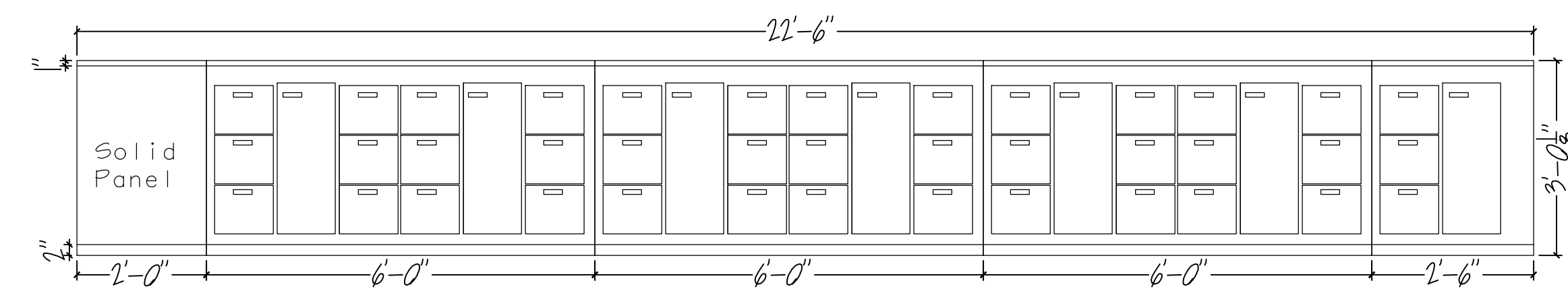
Unauthorized alteration or addition to this document is a violation of Section 7209 (2) of New York State Education Law.

General Notes:

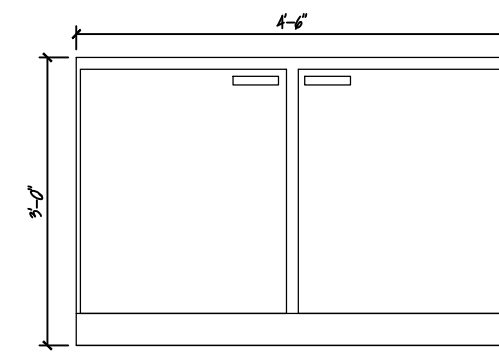
1. Contractor is responsible for all final measurements.
2. Dimensions provided are for reference only.
3. Any measurements are to be field verified including chem lab accessory locations prior to order placement.
4. Shop drawings are to be provided and approved by Schenectady County and Schenectady County Community College prior to order placement.
5. Countertops are to be Black Phenolic Resin.
6. Sinks are to be Black Epoxy Sinks unless otherwise noted.
7. Small oval epoxy sinks are approximately 7"x4" unless otherwise noted.
8. Faucets are 3/4" unless otherwise noted.
9. All Faucets, valves, electrical receptacles, and data receptacles are to be replaced unless otherwise noted.
10. 22-1/2" Deep Cabinets typical unless otherwise noted.
11. Vinyl base is to be the color black.
12. All drawers and cabinet doors must be lockable with 1 master key.



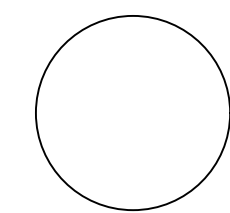
Top View



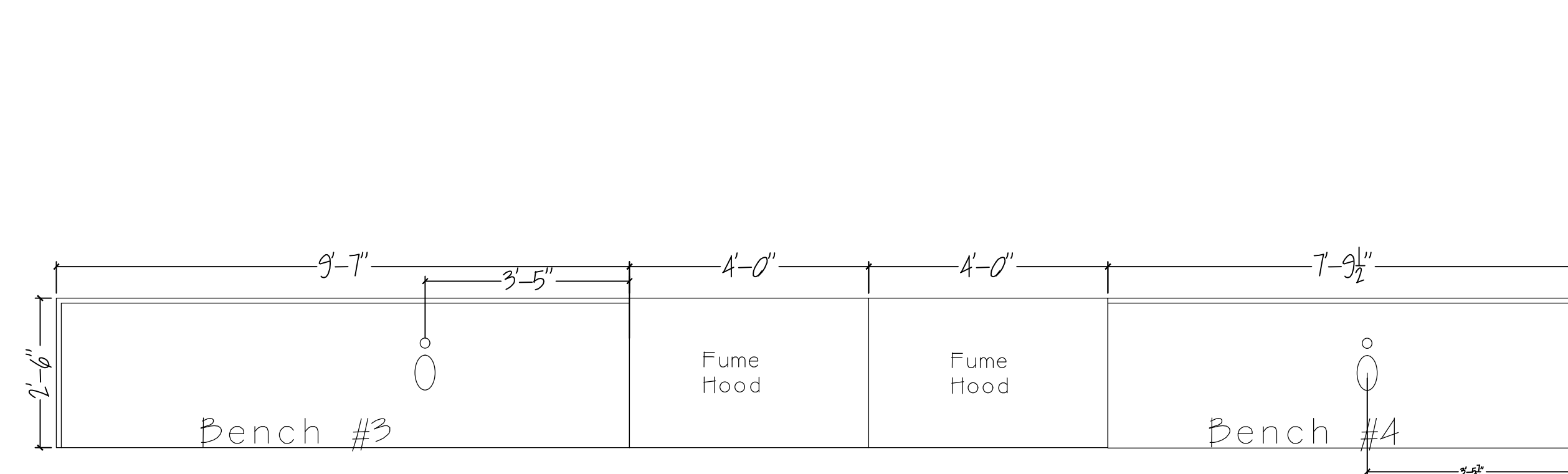
North & South View



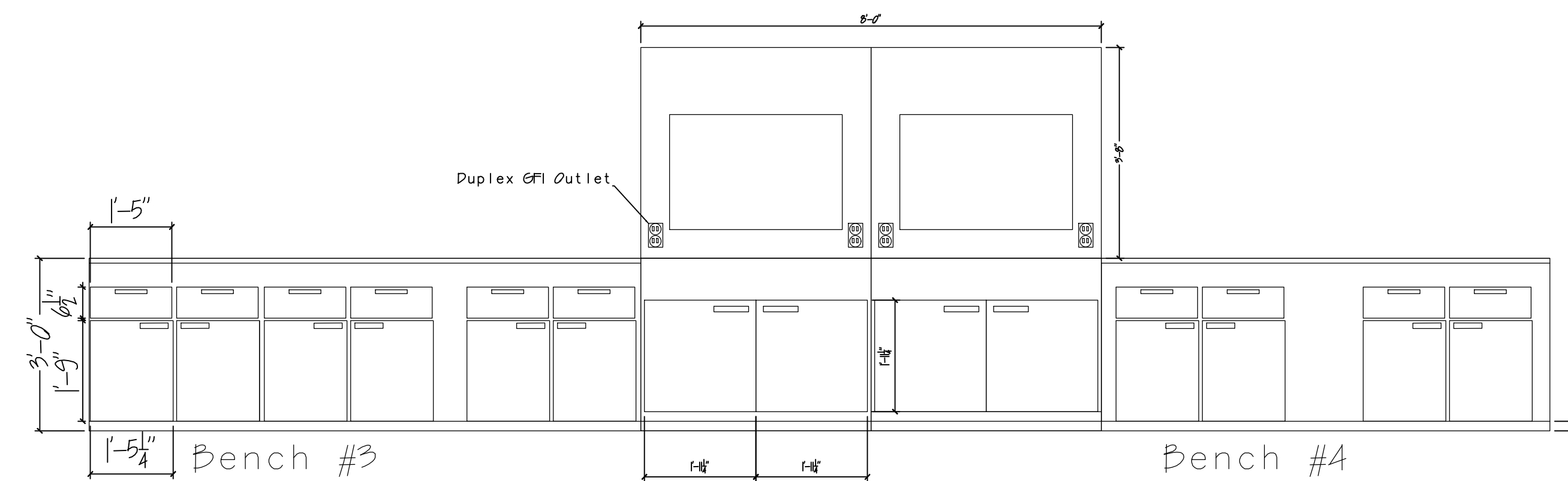
Side/West View



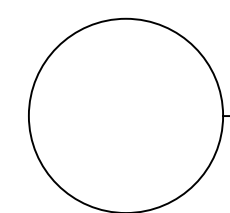
Bench #2



Top View



North View



Bench #3 and Bench #4

Schenectady County Office of Facilities
 SUNY Schenectady Chemistry Lab Renovation
 60 Washington Ave Schenectady NY 12305

Drawn by:

Checked by:

Project No.: RFB-2023-40

CAD File:

Date: March 2023

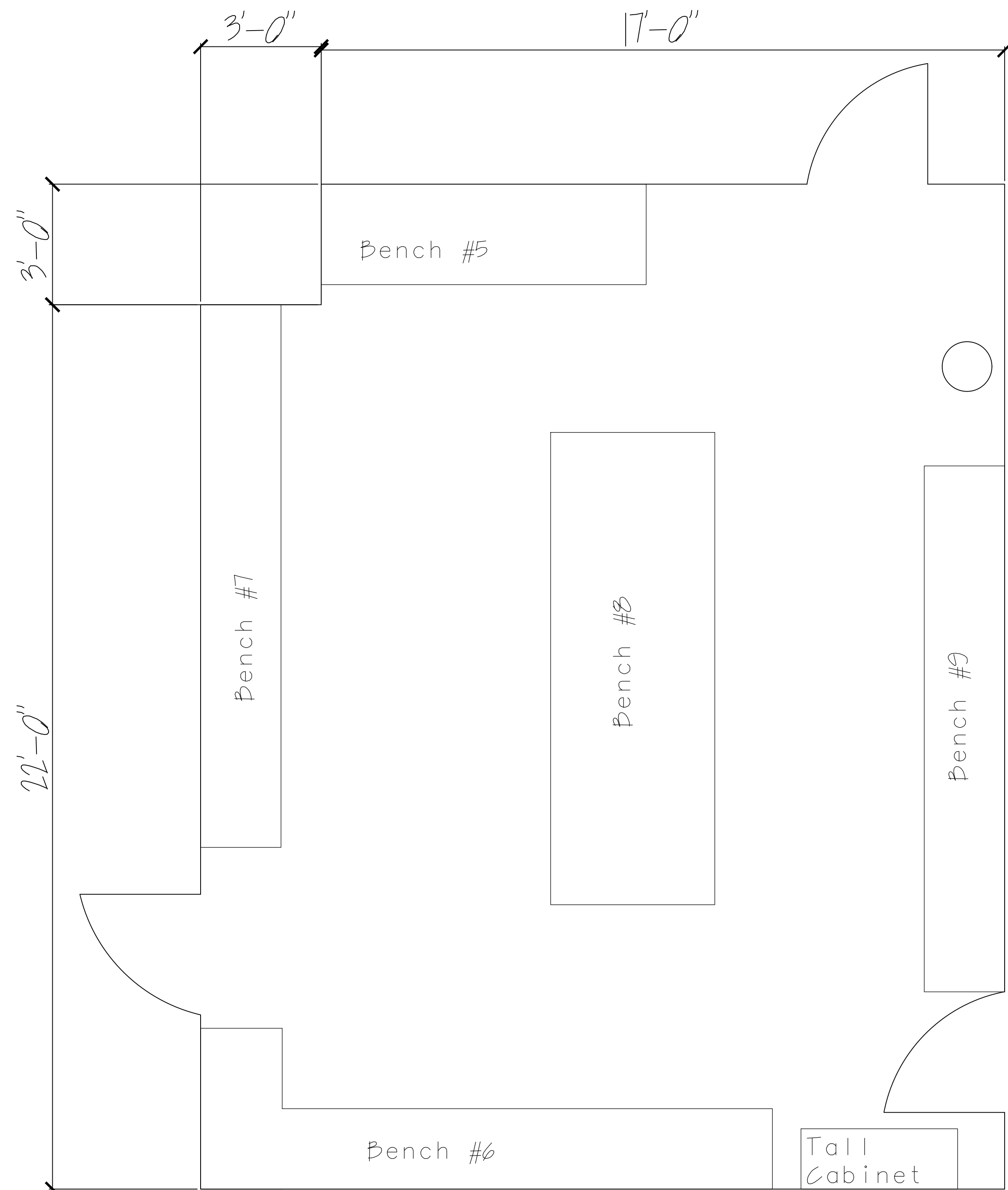
Title: Chem Lab 202 Cabinet Details

Scale: Not to Scale

Drawing No.:

A-3

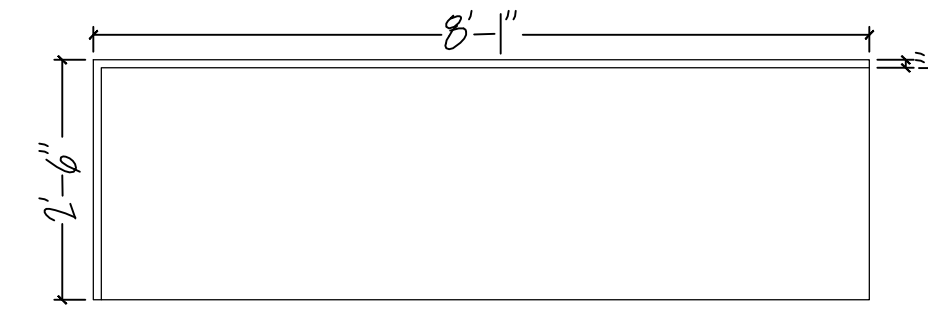
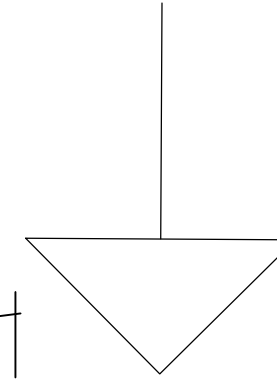
INSTRUMENT ROOM



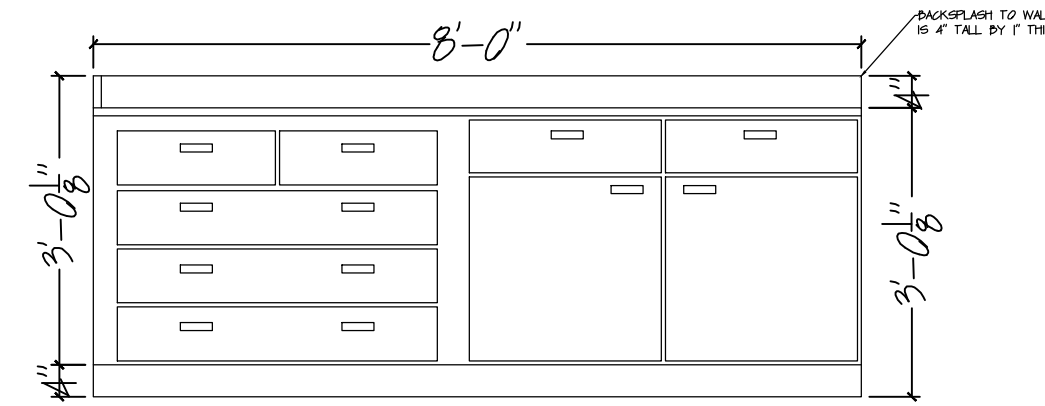
General Notes:

1. Contractor is responsible for all final measurements.
2. Dimensions provided are for reference only.
3. Any measurements are to be field verified including chem lab accessory locations prior to order placement.
4. Shop drawings are to be provided and approved by Schenectady County and Schenectady County Community College prior to order placement.
5. Countertops are to be Black Phenolic Resin.
6. Sinks are to be Black Epoxy Sinks unless otherwise noted.
7. Small oval epoxy sinks are approximately 7"x4" unless otherwise noted.
8. Faucets are $\frac{3}{4}$ " unless otherwise noted.
9. All Faucets, valves, electrical receptacles, and data receptacles are to be replaced unless otherwise noted.
10. 22-1/2" Deep Cabinets typical unless otherwise noted.
11. Vinyl base is to be the color black.
12. All drawers and cabinet doors must be lockable with 1 master key.

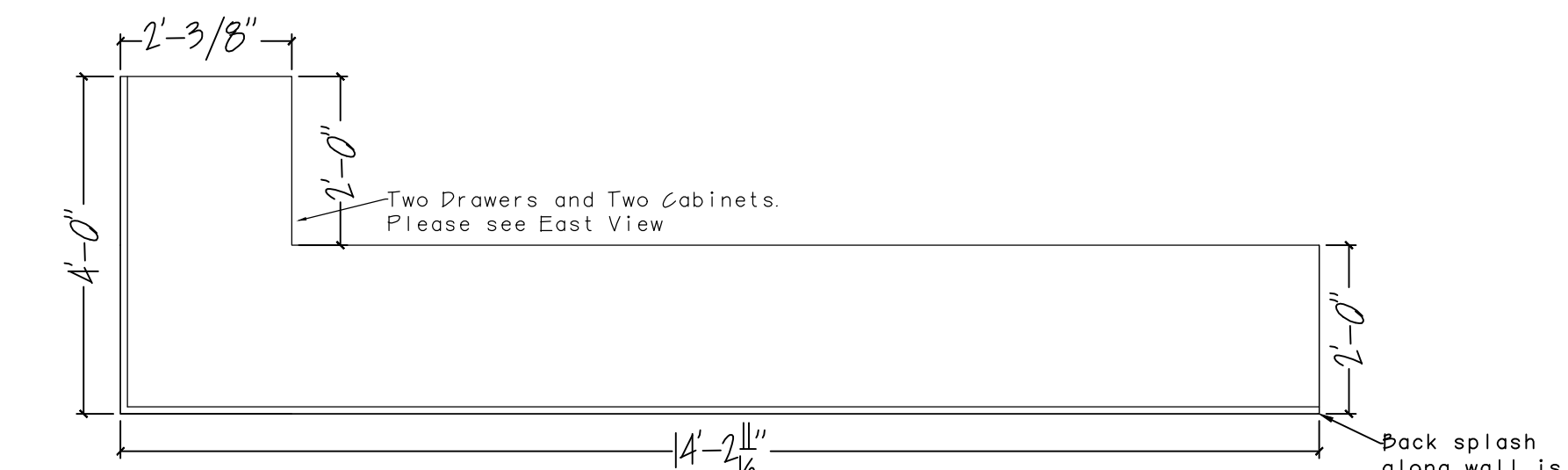
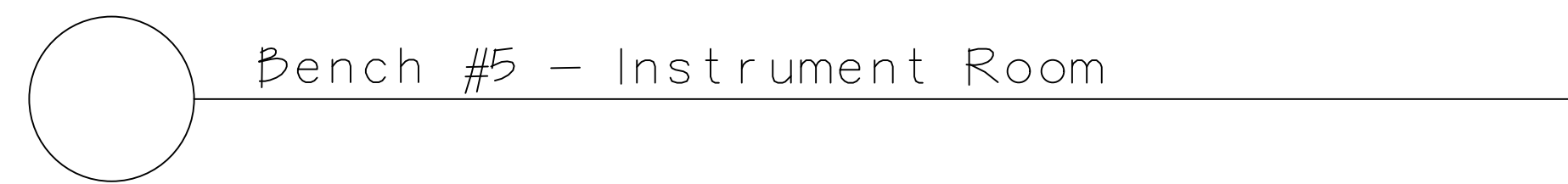
NORTH



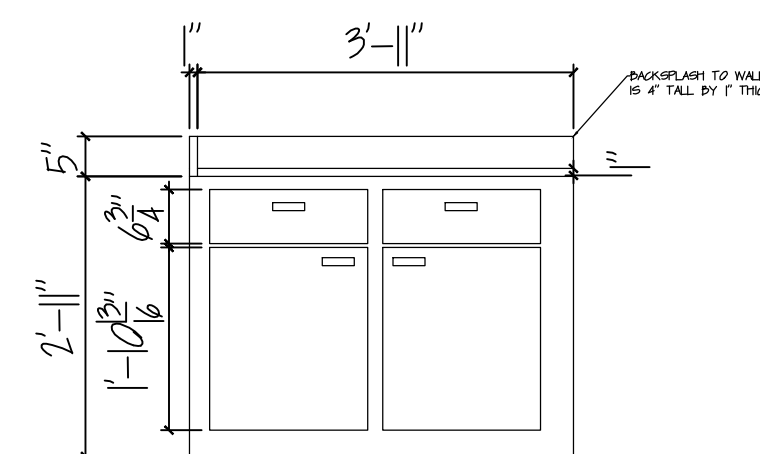
Top View



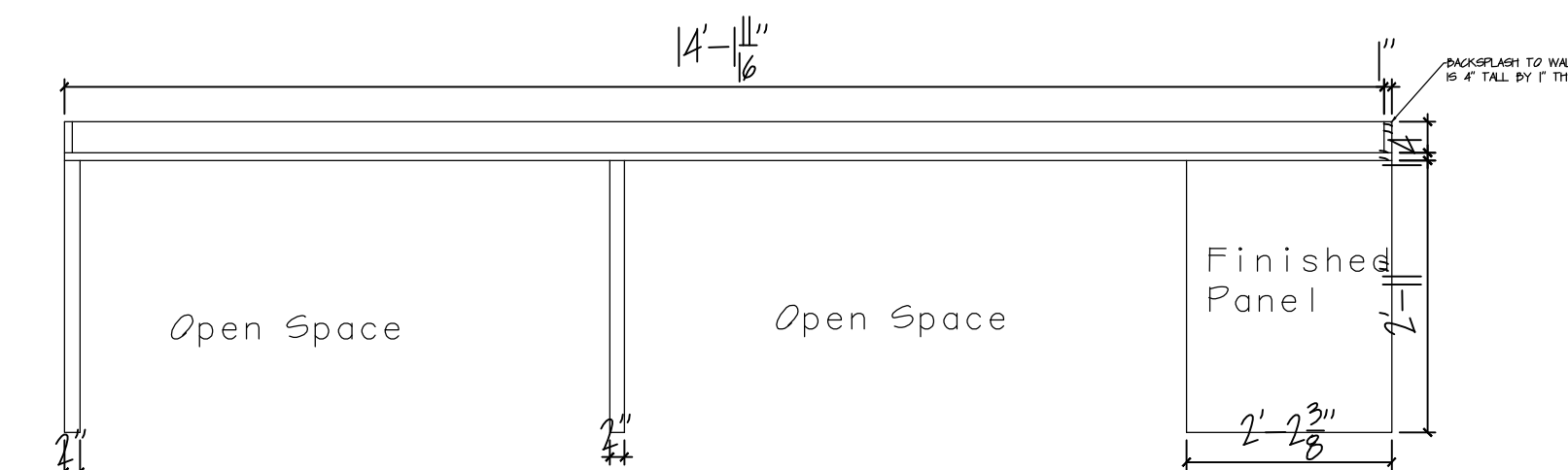
South View



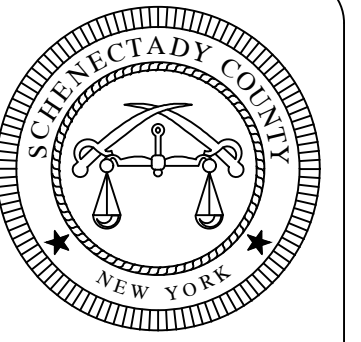
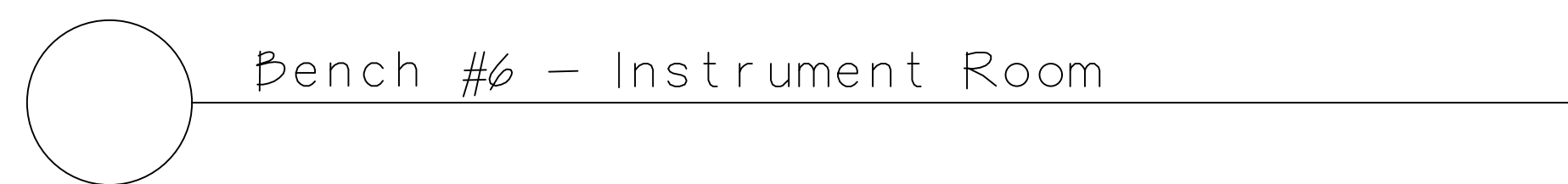
Top View



East View



North View



Unauthorized alteration or addition to this document is a violation of Section 7209 (2) of New York State Education Law.

Schenectady County Office of Facilities

SUNY Schenectady Chemistry Lab Renovation
60 Washington Ave Schenectady NY 12305

Drawn by:

Checked by:

Project No.:
RFB-2023-40

CAD File:

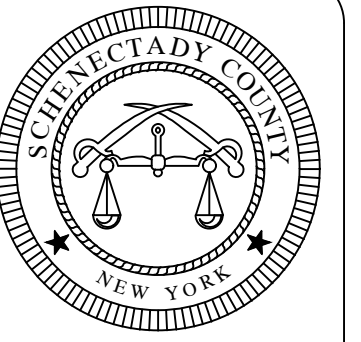
Date:
March 2023

Title:
Instrument Room
Floor Plan
and Cabinet Details

Scale: Not to Scale

Drawing No.:

A-4



Unauthorized alteration or addition to this document is a violation of Section 7209 (2) of New York State Education Law.

Schenectady County Office of Facilities

SUNY Schenectady Chemistry Lab Renovation
60 Washington Ave Schenectady NY 12305

Drawn by:

Checked by:

Project No.:
RFB-2023-40

CAD File:

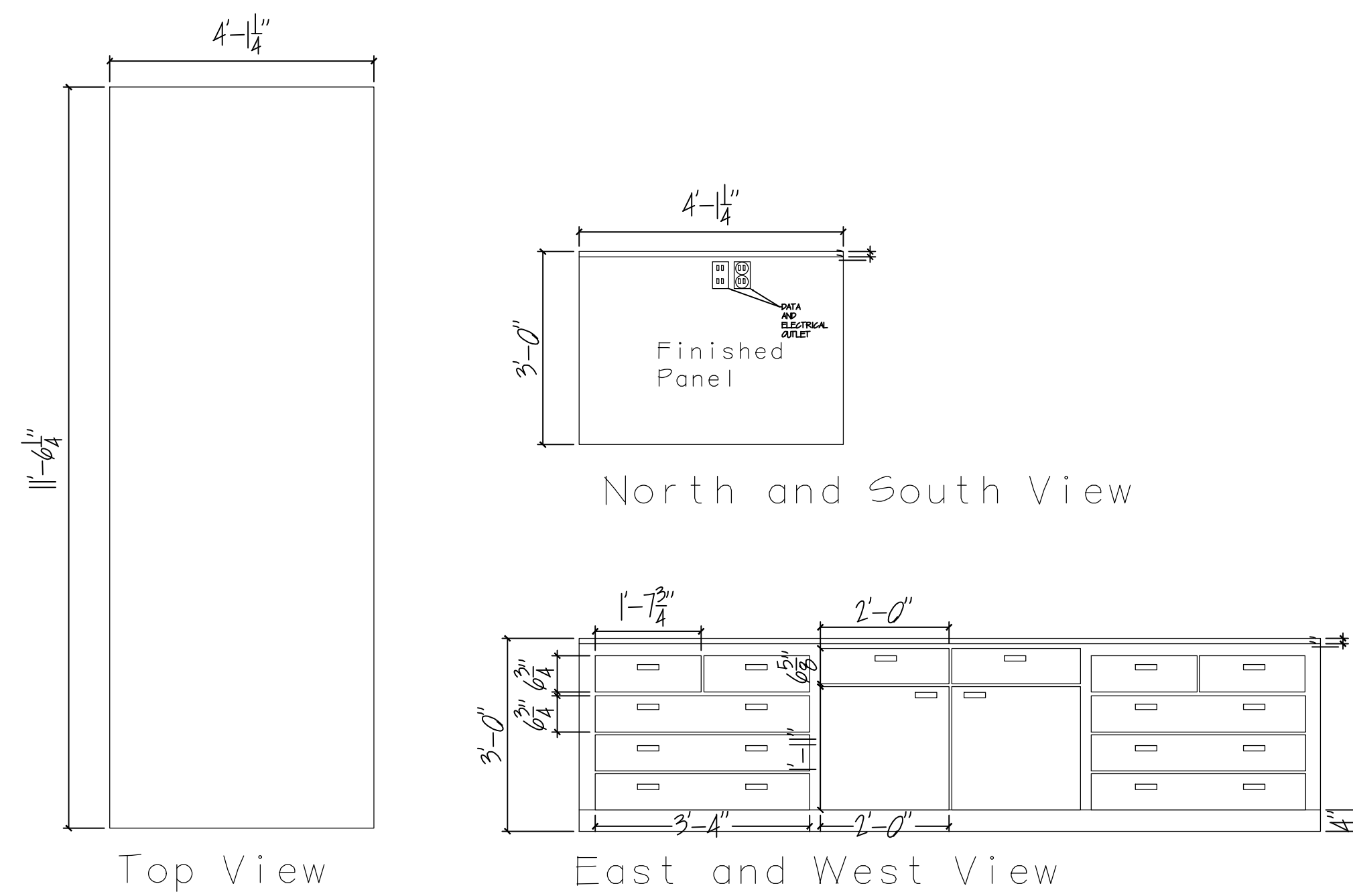
Date:
March 2023

Title:
Insturment Room
Cabinet Details

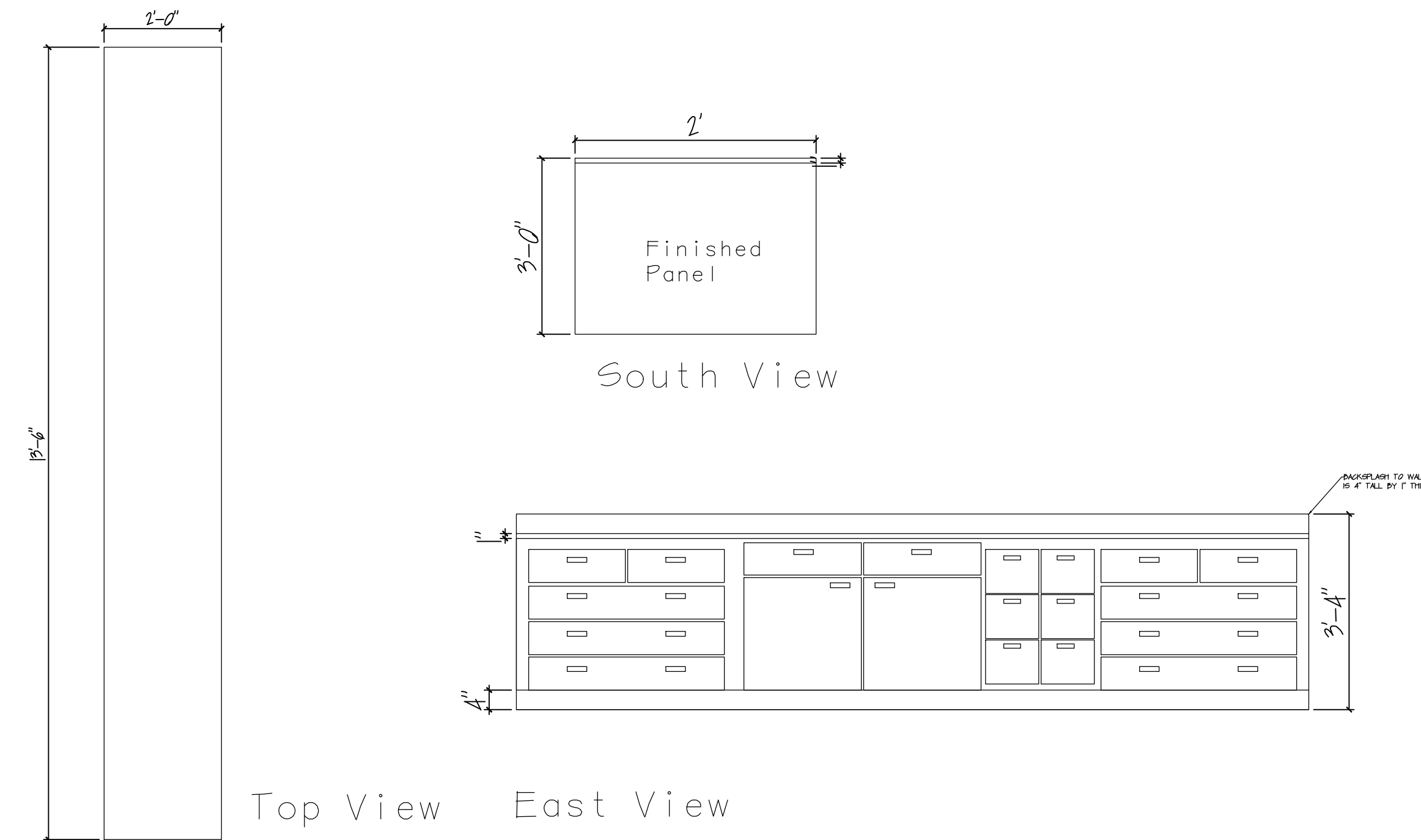
Scale: Not to Scale

Drawing No.:

A-5



Bench #8 - Instrument Room



Bench #7 - Instrument Room

General Notes:

1. Contractor is responsible for all final measurements.
2. Dimensions provided are for reference only.
3. Any measurements are to be field verified including chem lab accessory locations prior to order placement.
4. Shop drawings are to be provided and approved by Schenectady County and Schenectady County Community College prior to order placement.
5. Countertops are to be Black Phenolic Resin.
6. Sinks are to be Black Epoxy Sinks unless other wise noted.
7. Small oval epoxy sinks are approximately 7"x4" unless otherwise noted.
8. Faucets are 3/4" unless otherwise noted.
9. All Faucets, valves, electrical receptacles, and data receptacles are to be replaced unless otherwise noted.
10. 22-1/2" Deep Cabinets typical unless otherwise noted.
11. Vinyl base is to be the color black.
12. All drawers and cabinet must be lockable with 1 master key.